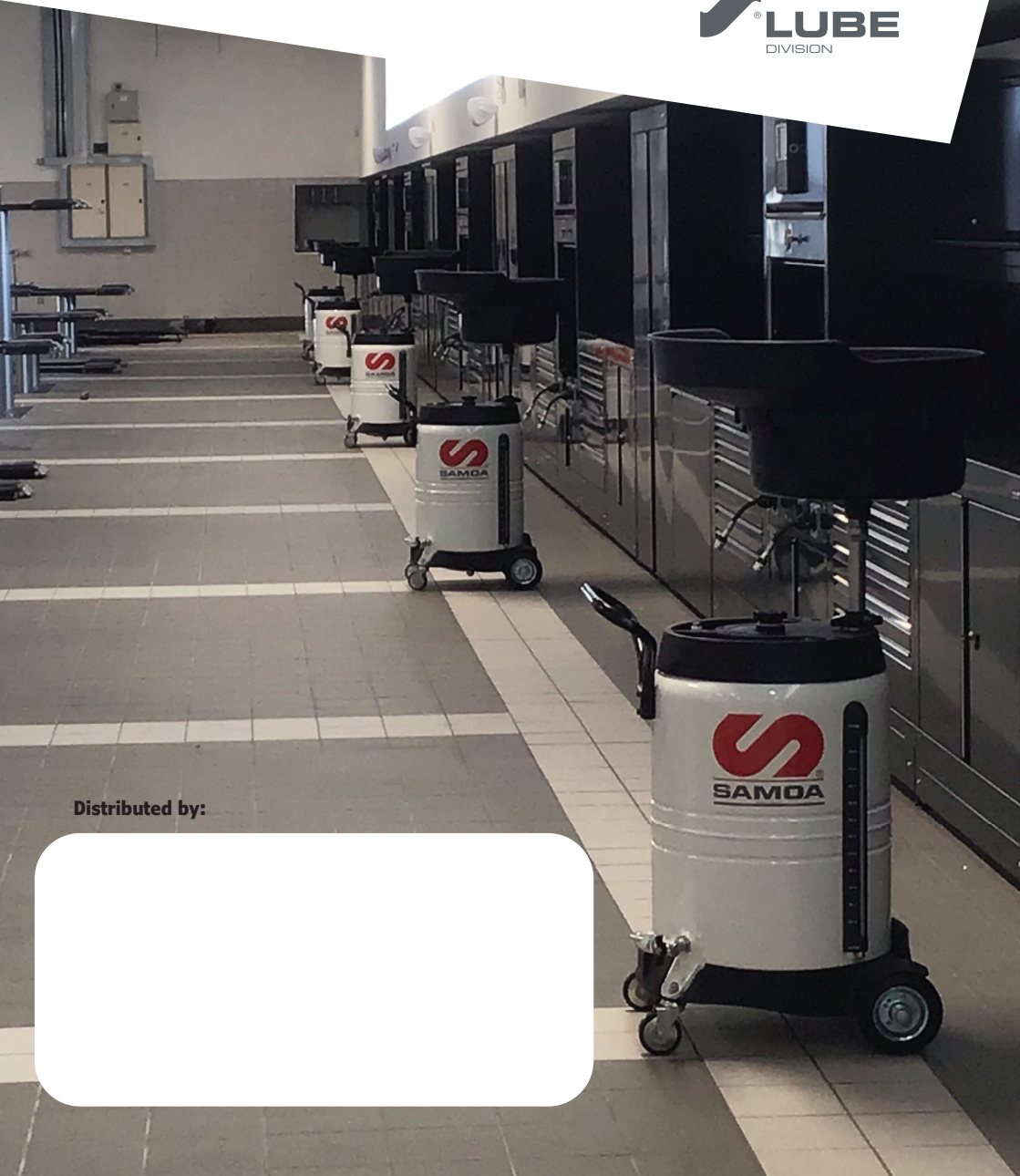
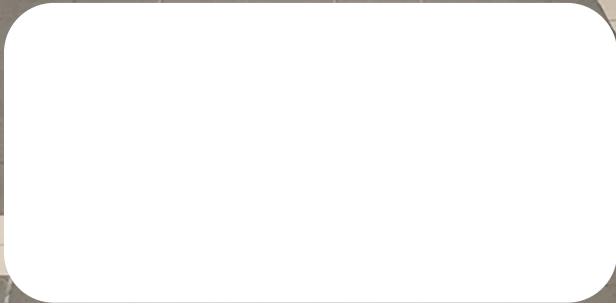


FLUID & LUBRICATION PRODUCTS



Distributed by:



Air Operated Oil Pumps

1:1 Ratio Oil Pump

Low pressure pump for transferring lubricants and non-corrosive fluids.

Suitable for: transmission fluid, hydraulic oil, synthetic & mineral based lubricants and diesel.

351120 - Stub Pump

352120 - 205 Litre Drum



3:1 Ratio Oil Pump

Medium pressure pump for dispensing lubricants from mobile units, oil distribution packages and small systems.

Suitable for: transmission fluid, hydraulic oil, synthetic & mineral based lubricants.

353120 - Stub Pump

354120 - 205 Litre Drum

3:1 & 5:1 Ratio High Volume Oil Pump

High pressure pumps for dispensing lubricants in large sized installations, pump capable of pumping all types of lubricants, even those of high viscosity.

Suitable for: transmission fluid, hydraulic oil, synthetic & mineral based lubricants and gear oil.

340120 - 3:1 Stub Pump

341120 - 3:1 205 Litre Drum

347120 - 5:1 Stub Pump

348120 - 5:1 205 Litre Drum



Heavy-Duty Air Operated Oil Pumps

PM35 Heavy-Duty Oil Pump

Medium and high pressure heavy-duty pumps for oil distribution applications.

Suitable for: transmission fluid, gear oil, hydraulic oil and synthetic & mineral based lubricants.

535530 - 5:1 Stub Pump

535510 - 5:1 205 Litre Drum

535830 - 8:1 Stub Pump

535810 - 8:1 205 Litre Drum



PM45 Heavy-Duty Oil Pump

Heavy duty pumps for large volumes/high delivery applications.

Suitable for: transmission fluid, gear oil, hydraulic oil and synthetic & mineral based lubricants.

536330 - 3:1 Stub Pump

536630 - 6:1 Stub Pump

536030 - 10:1 Stub Pump

536010 - 10:1 205 Litre Drum

PM60 Heavy-Duty High-Delivery Oil Pump

Heavy-duty, high-delivery pumps for large installations.

Suitable for: transmission fluid, gear oil, hydraulic oil and synthetic & mineral based lubricants.

537630 - 6:1 Stub Pump

537130 - 12:1 Stub Pump



Air Operated Oil Pump Kits

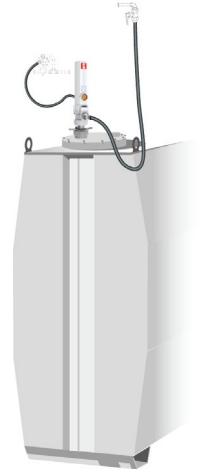
3:1 & 5:1 Tank Mounted Pump Kit

Pump kit for installation directly into a metal 4ft high tank c/w 3:1 or 5:1 ratio air operated pump.

379003 - 3:1 Tank Mounted Pump Kit

379403 - 3:1HV Tank Mounted Pump Kit

379503 - 5:1HV Tank Mounted Pump Kit



3:1 & 5:1 Wall Mounted Pump Kit for 205 Litre Drums

Pump kit for wall mounting for connection to 205 litre drums c/w 3:1 or 5:1 ratio air operated pump.

379000 - 3:1 Wall Mounted Pump Kit 205 Litre Drums

379400 - 3:1HV Wall Mounted Pump Kit 205 Litre Drums

379500 - 5:1HV Wall Mounted Pump Kit 205 Litre Drums

3:1 & 5:1 Drum Mounted Pump Kit for 205 Litre Drums

Pump kit for drum mounting to 205 litre drums c/w 3:1 or 5:1 ratio air operated pump.

379300 - 3:1 Drum Mounted Pump Kit 205 Litre Drums

379404 - 3:1HV Drum Mounted Pump Kit 205 Litre Drums

379504 - 5:1HV Drum Mounted Pump Kit 205 Litre Drums



Heavy-Duty Air Operated Oil Pump Kits

PM35 5:1 & 8:1 Tank Mounted Pump Kit

Heavy-duty pump kit for installation directly into a metal 4ft high tank c/w 5:1 or 8:1 ratio heavy-duty air operated pump.

539531 - 5:1 Tank Mounted Pump Kit

539831 - 8:1 Tank Mounted Pump Kit



PM35 5:1 & 8:1 Wall Mounted Pump Kit for 205 Litre Drums

Heavy-duty pump kit for wall mounting for connection to 205 litre drums c/w 5:1 or 8:1 ratio heavy-duty air operated pump.

539530 - 5:1 Wall Mounted Pump Kit for 205 Litre Drums

539830 - 8:1 Wall Mounted Pump Kit for 205 Litre Drums

PM35 5:1 & 8:1 Drum Mounted Pump Kit for 205 Litre Drums

Heavy-duty pump kit for drum mounting to 205 litre drums c/w 5:1 or 8:1 ratio air operated pump.

539510- 5:1 Drum Mounted Pump Kit for 205 Litre Drums

537130 - 8:1 Drum Mounted Pump Kit for 205 Litre Drums



3:1 Ratio Oil Pump Transfer Kits

3:1 Drum Mounted Transfer Pump Kit for 205 Litre Drums

3:1 Ratio Transfer Pump Kit for drum mounting to 205 litre drums c/w 3:1 ratio pump, delivery hose and oil control gun.

454111 - 3:1 Transfer Package



3:1 Drum Mounted Transfer Metered Pump Kit for 205 Litre Drums

3:1 Ratio Transfer Metered Pump Kit for drum mounting to 205 litre drums c/w 3:1 ratio pump, delivery hose and digital hose end meter.

454110 - 3:1 Transfer Metered Package

3:1 Drum Mounted Transfer Pump with Spigot Valve for 205 Litre Drums

3:1 ratio transfer pump with spigot valve for drum mounting to 205 litre drums c/w 3:1 ratio pump, oil spigot valve and tray.

454100 - 3:1 Transfer Pump with Spigot Valve



3:1 Transfer Pump for 1000 Litre IBC

3:1 ratio transfer pump for side mounting on 1000 litre IBC c/w 3:1 ratio pump, IBC side bracket, delivery hose and digital hose end meter.

454150 - 3:1 Transfer Pump for IBC

3:1 Ratio Oil Pump Packages

3:1 Drum Mounted Pump Package for 205 Litre Drums with 10 m Hose Reel

3:1 ratio drum mounted pump for 205 litre drums c/w 10 m hose reel and digital hose end meter.

454605 - Drum Mounted Pump Package with 10 m Hose Reel



3:1 Wall Mounted Pump Package for 205 Litre Drums with 10 m Hose Reel and Drip Pocket

3:1 ratio wall mounted pump for 205 litre drums c/w 10 m enclosed hose reel and digital hose end meter.

454659 - Wall Mounted Pump Package with 10 m Hose Reel and Drip Pocket

3:1 Top Mounted Pump Package for 1000 Litre IBC with 10 m Hose Reel

3:1 ratio top mounted pump for 1000 litre IBC's c/w 10 m hose reel and digital hose end meter.

454694 - Top Mounted Pump Package for IBC with 10 m Hose Reel



3:1 Side Mounted Pump Package for 1000 Litre IBC with 10 m Hose Reel

3:1 ratio side mounted pump for 1000 litre IBC's c/w 10 m hose reel and digital hose end meter.

454699 - Side Mounted Pump Package for IBC with 10 m Hose Reel

25 Litre & 70 Litre Mobile Oil Dispensers

25 Litre Pressurised Mobile Oil Dispenser

Mobile unit for dispensing viscous lubricants. Includes 25 litre container which needs to be pressurised using a tyre inflator. Includes 1.5 m delivery hose and oil control gun.

324000 - 25 Litre Mobile Oil Dispenser

324010 - 25 Litre Mobile Oil Dispenser with Meter



Self-Contained Air Operated Mobile Oil Dispenser - 25 Litre or 70 Litre

Mobile unit for dispensing viscous lubricants. Includes either a 25 litre or 70 litre capacity tank, 2:1 ratio air operated pump, meter, 1.5 m delivery hose and oil control gun or digital hose end meter.

327020 - 25 Litre Self-Contained Air Operated Mobile Oil Dispenser with Oil Control Gun

328010 - 70 Litre Self-Contained Air Operated Mobile Oil Dispenser with Digital Hose End Meter

Self-Contained Hand Operated Mobile Oil Dispenser - 25 Litre or 70 Litre

Mobile unit to dispense viscous lubricants. Includes either a 25 litre tank or 70 litre tank, a hand pump and a 1.5 m delivery hose with angled spout.

325000 - 25 Litre Self-Contained Hand Operated Mobile Oil Dispenser

325010 - 25 Litre Self-Contained Hand Operated Mobile Oil Dispenser with Meter

326000 - 70 Litre Self-Contained Hand Operated Mobile Oil Dispenser

326010 - 70 Litre Self-Contained Hand Operated Mobile Oil Dispenser with Meter



205 Litre Mobile Oil Dispensers

3:1 Air Operated Drum Mounted Mobile Oil Dispenser for 205 Litre Drum

Mobile oil dispenser with 3:1 ratio drum mounted pump for 205 litre drums c/w trolley, 3 m delivery hose and digital hose end meter.

376300 - Drum Mounted Mobile Oil Dispenser for 205 Litre Drums



3:1 Air Operated Trolley Mounted Mobile Oil Dispenser for 205 Litre Drum

Mobile oil dispenser with 3:1 ratio trolley mounted pump for 205 litre drums c/w trolley, 3 m delivery hose and digital hose end meter.

376610 - Trolley Mounted Mobile Oil Dispenser for 205 Litre Drums

3:1 Air Operated Trolley Mounted Mobile Oil Dispenser for 205 Litre Drums with 10m Hose Reel

Mobile oil dispenser with 3:1 ratio trolley mounted pump for 205 litre drums c/w trolley, digital hose end meter and 10 m hose reel.

378120 - Trolley Mounted Mobile Oil Dispenser for 205 Litre Drums with 10 m Hose Reel



Air Operated Grease Pumps

PM3, 55:1 Ratio Grease Pump

55:1 ratio grease pump suitable for 12.5 kg-20 kg pails, 50 kg drums and 180 kg drums.

404100 - For 12.5 kg - 20 kg Pails

407200 - For 50 kg Drums

409200 - For 185 kg Drums



PM35, 60:1 Ratio Grease Pump

60:1 ratio grease pump for use in high pressure and high volume delivery. Can be used with grease up to NLGI-2 consistency. Suitable for 12.5 kg-20 kg pails, 50 kg drums and 185 kg drums.

530630 - For 12.5 kg to 20 kg Pails

530620 - For 50 kg Drums

530610 - For 185 kg Drums

PM45, 25:1/40:1/70:1 Ratio Grease Pump

Heavy-duty grease pump for available for wide range of applications. Can be used with grease up to NLGI-2 consistency.

531210 - 25:1 Ratio Pump for 185 kg Drums

531420 - 40:1 Ratio Pump for 50 kg Drums

531410 - 40:1 Ratio Pump for 185 kg Drums

531720 - 70:1 Ratio Pump for 50 kg Drums

531710 - 70:1 Ratio Pump for 185 kg Drums



PM3, 55:1 Ratio Grease Pump Units

PM3, 55:1 Mobile Grease Unit for 12.5 to 18 kg & 20 kg Pails

55:1 ratio mobile grease unit for use with 12.5 to 18 kg and 20 kg pails. Includes 55:1 ratio pump, drum cover, 2 m delivery hose, grease control gun with z-swivel and trolley.

424150 - Mobile Grease Unit for 12.5 to 18 kg Pails

424150.002 - Mobile Grease Unit for 12.5 to 18 kg Pails with Follower Plate

424152 - Mobile Grease Unit for 20 kg Pails



PM3, 55:1 Portable Grease Unit for 12.5 to 18 kg & 20 kg Pails

55:1 ratio portable grease unit for use with 20 kg pails. Includes 55:1 ratio pump, drum cover, handle, 2 m delivery hose and grease control gun with z-swivel.

424170 - Portable Grease Unit for 12.5 to 18 kg Pails

424172 - Portable Grease Unit for 20 kg Pails

PM3, 55:1 Mobile Grease Unit for 50 kg Drums

55:1 ratio mobile grease unit for use with 50 kg drum. Includes 55:1 ratio pump, drum cover, 3 m delivery hose, grease control gun with z-swivel and trolley. Optional follower plate version available.

425150 - Mobile Grease Unit for 50 kg Drums

425150.002 - Mobile Grease Unit for 50 kg Drums with Follower Plate



PM3, 55:1 Mobile Grease Unit for 185 kg Drums

55:1 ratio mobile grease unit for use with 185 kg drum. Includes 55:1 ratio pump, drum cover, follower plate, 4 m delivery hose, grease control gun with z-swivel and trolley.

428243 - Mobile Grease Unit for 185 kg Drums

PM35, 60:1 Ratio Grease Pump Units

PM35, 60:1 Pump & Hose Reel Package for 185 kg Drums

PM35, 60:1 ratio pump, drum cover, follower plate, hose connection kit, grease control gun with z-swivel, delivery hose and 15 m hose reel.

453612 - Pump & Hose Reel Package for 185 kg Drum



PM35, 60:1 Pump Kit for 50 kg or 185 kg Drums

PM35, 60:1 ratio pump, drum cover, follower plate and hose connection kit.

534620 - For 50 kg Drums

534610 - For 185 kg Drums

PM35, 60:1 Mobile Grease Package for 185 kg Drums

PM35, 60:1 ratio pump, drum cover, follower plate, grease gun with z-swivel, delivery hose and trolley.

426244 - Mobile Package for 185kg Drums



PM35, 60:1 Mobile Grease Package for 50 kg Drums

PM35, 60:1 ratio pump, drum cover, grease control gun with z-swivel, delivery hose and trolley.

423160 - Mobile Package for 50 kg Drums



PM35, PM45 & PM60 Grease Pump Kits



PM35, PM45, PM60 Pump Systems with Pneumatic Pump Hoist & Gravity Inductor for 50 kg and 185 kg Drums

PM35, PM45 & PM60 grease pumps mounted onto a gravity fed follower plate and an air operated pump hoist for use with 50 kg and 185 kg drums.

The air operated pump hoist lifts and lowers the pump, making drum changes easier, faster and safer. The pump lower end is rigidly fixed to a follower plate with a single rubber lip. The weight of the pump, pump bracket and follower plate plus the atmospheric pressure pushes the assembly against the fluid eliminating channelling and air pockets, keeping the lubricant free from contaminants, minimising waste and aiding pump priming.



534611 - PM35, 60:1 Pump System for 185 kg Drums

534621 - PM35, 60:1 Pump System for 50 kg Drums

534411 - PM45, 40:1 Pump System for 185 kg Drums

534422 - PM45, 40:1 Pump System for 50 kg Drums

534711 - PM45, 70:1 Pump System for 185 kg Drums

534722 - PM45, 70:1 Pump System for 50 kg Drums

534811 - PM60, 80:1 Pump System for 185 kg Drums

534822 - PM60, 80:1 Pump System for 50 kg Drums



PM45 & PM60 Pump System with Pneumatic Inductor for 185 kg Drums

PM45 and PM60 grease pumps mounted onto an air operated inductor plate for use with high viscosity, hard to pump greases directly from 185 kg drums.

534421 - PM45, 40:1 Pump System for 185 kg Drums

534721 - PM45, 70:1 Pump System for 185 kg Drums

534121 - PM60, 12:1 Pump System for 185 kg Drums

534821 - PM60, 80:1 Pump System for 185 kg Drums

Grease Pump Accessories



Drum Covers for PM3 & PM35

With 2" BSP (F) bung opening.

Drum Ext Dia (Min/Max)

418013 - For 12.5 to 18 kg Pails	265/310 mm
418002 - For 20 kg Pails	285/330 mm
418016 - For 50 kg Drums (UK)	350/395 mm
418006 - For 185 kg Drums	565/610 mm

Follower Plates for PM3 & PM35

Follower plates eliminate air pockets and aid pump prime. Rubber flange minimises waste. With handle for removing from empty drums.

Drum Ext Dia (Min/Max)

417006 - For 12.5 kg Pails	190/260 mm
417001 - For 12.5 to 18 kg Pails	260/298 mm
417005 - For 20 kg Pails	300/340 mm
417002 - For 50 kg Drums (UK)	330/370 mm
417004 - For 185 kg Drums	550/590 mm



HD Drum Covers for PM45 & PM60

Covers made from heavy duty steel gauge to withstand hard usage.

Drum Ext Dia (Max/Min)

418026 - For 185 kg Drums	620/580 mm
418017 - For 50 kg Drums	395/350 mm

HD Follower Plates for PM45 & PM60

Follower plates eliminate channelling and air pockets, keep lubricant free from contaminants, remove all grease from the drum and aid pump prime.

417009 - For 185 kg Drums
417011 - For 50 kg Drums (UK)



Drum Trolleys



Trolley for 20 kg Pails

Two wheel trolley with tubular frame for 20 and 50 kg drums.

430000 - Trolley for 20 kg pails

Trolley for 20 kg and 50 kg Drums

Two wheel and two front rubber pads trolley with tubular frame.

431001 - Trolley for 20 kg & 50 kg drums

Trolley for 50 kg Drums

Four wheel trolley with tubular frame.

431000 - Trolley for 50 kg drums



Trolley for 185 kg Drums

Two solid rubber wheels and one swivelling rubber wheel with brake. A hose reel and a pump can be mounted using optional bracket.

432000 - Trolley for 185 kg drums

360134 - Pump Bracket

360135 - Hose Reel Bracket

Heavy-Duty Trolley for 185 kg Drums

Two 260 mm front tyres and one swivelling solid rubber wheel with brake. A hose reel can be mounted using optional bracket.

432814 - Heavy-Duty Trolley for 185 kg Drums

360113 - Hose Reel Bracket



Air Operated Polypropylene Diaphragm Pumps



DF20 Polypropylene Diaphragm Pump

Compact and reliable polypropylene diaphragm pump for small volume transfer (20 litres/min max). Suitable for antifreeze and antifreeze solutions, windscreen wash solutions, detergents and AdBlue®/DEF

556115 - DF20 Diaphragm Pump - 20 l/min

DF30 Polypropylene Diaphragm Pump

Very compact and reliable polypropylene diaphragm pump for small to medium volume transfer (38 litres/min max).

553164 - DF30 Polypropylene Diaphragm Pump

(Suitable for antifreeze and windscreen wash solutions, AdBlue®/DEF)

553162 - DF30 Polypropylene Diaphragm Pump - ATEX

(ATEX approved - Suitable for pure ethanol, pure windscreen wash and detergents)

553124 - Polypropylene Diaphragm Pump - Dual Inlet Body

(Suitable for 1:1 ratio water/windscreen or antifreeze solutions)



DF50 Polypropylene Diaphragm Pump

Very compact and reliable pump for medium volume transfer (50 litre/min max).

552164 - DF50 Polypropylene Diaphragm Pump

(Suitable for antifreeze and windscreen wash solutions, AdBlue®/DEF)

552162 - DF50 Polypropylene Diaphragm Pump - ATEX

(ATEX approved - Suitable for pure ethanol, pure windscreen wash and detergents)

552124 - DF50 Polypropylene Diaphragm Pump - Dual Inlet Body

(Suitable for 1:1 ratio water/windscreen or antifreeze solutions)



DF100 Polypropylene Diaphragm Pump

Very compact and reliable polypropylene diaphragm pump for medium to large volume transfer (100 litre/min max).

551164 - DF100 Polypropylene Diaphragm Pump

(Suitable for antifreeze and windscreen wash solutions, AdBlue®/DEF)

551162 - DF100 Polypropylene Diaphragm Pump - ATEX

(ATEX approved - Suitable for pure ethanol, pure windscreen wash and detergents)



Air Operated Aluminium Diaphragm Pumps



DF50 Aluminium Diaphragm Pump

Very compact and reliable pump for medium volume transfer (50 litre/min max).

552010 - DF50 Aluminium Diaphragm Pump
(Suitable for antifreeze and windscreen wash solutions)

552030 - DF50 Aluminium Diaphragm Pump
(Suitable for antifreeze solutions, lubricants, waste oil evacuation and transfer)

DF100 Aluminium Diaphragm Pump

Very compact and reliable aluminium diaphragm pump for medium to large volume transfer (100 litre/min max).

551010 - DF100 Aluminium Diaphragm Pump
(Suitable for antifreeze and windscreen wash solutions)

551030 - DF100 Aluminium Diaphragm Pump
(Suitable for antifreeze solutions, lubricants, diesel, waste oil evacuation and transfer)



DF250 Aluminium Diaphragm Pump

Very reliable aluminium diaphragm pump for large volume transfer (250 litre/min max), dispensing and evacuating a variety of fluids.

554010 - DF250 Aluminium Diaphragm Pump
(Suitable for antifreeze solutions)

554030 - DF250 Aluminium Diaphragm Pump
(Suitable for antifreeze solutions, lubricants, diesel, waste oil evacuation and transfer)

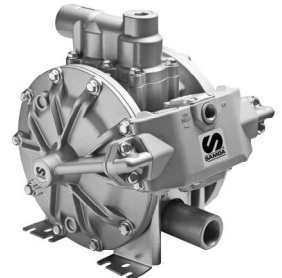
DP200 Diaphragm Pump

Very reliable aluminium or polypropylene diaphragm pump for large volume transfer (200 litre/min max), dosing and dispensing a variety of fluids.

555164 - DP200 Polypropylene Diaphragm Pump
(Suitable for antifreeze and windscreen wash solutions, AdBlue®/ DEF)

555010 - DP200 Aluminium Diaphragm Pump
(Suitable for antifreeze solutions)

555030 - DP200 Aluminium Diaphragm Pump
(Suitable for lubricants, diesel, waste oil evacuation and transfer)



Diaphragm Pump Accessories



Diaphragm Pump Wall Brackets

Various wall brackets for SAMOA diaphragm pumps.

360100 - Wall bracket for DF30 and DF50 pumps

360101 - Wall bracket for DF100 pumps

360142 - Wall bracket for DP200 pumps

360144 - Wall bracket for DF250 pumps

Diaphragm Pump Suction Kits for Water Based Fluids

For use with 205 litre drums or 1000 litre IBCs. Not for use with lubricants

367020 - Suction Kit for DF30 and DF50 pumps

367021 - Suction Kit for DF100 and DP200 pumps



Diaphragm Pump Suction Kits for Waste Fluids

For use on SAMOA diaphragm pumps for waste fluids.

367022 - Suction Kit for DF50 pumps

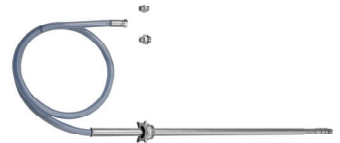
367023 - Suction Kit for DF100 and DP200 pumps

Diaphragm Pump Suction Kits for Lubricants

For use with 205 litre drums or 1000 litre IBCs.

367005 - Suction Kit for DF50 and DF100 pumps

367007 - Suction Kit for DP200 and DF250 pumps



Directflo® Pump Silencer

When placed at the pump air exhaust port instead of the standard muffler, it reduces the pump noise level below 70 dB.

538338 - Pump Silencer

Air Operated Piston Pumps for Fluids



PM2, 1:1 Ratio Nickel Protected Pump

Nickel protected universal stub pump. 1:1 ratio. Suitable for antifreeze.

332120 - Nickel Protected 1:1 Pump

PM2, 1:1 Ratio Stainless Steel Pump

Stainless steel universal stub pump; divorced. 1:1 ratio. Suitable for a wide range of fluids including acetone, alcohol, diesel, kerosene, water soluble cutting oils, water and others.

331120 - Stainless Steel 1:1 Ratio Pump



PM4, 3:1 Ratio Stainless Steel Pump

Stainless steel universal stub pump; divorced. 3:1 ratio. Suitable for a wide range of fluids including acetone, alcohol, diesel, kerosene, water soluble cutting oils, water and others.

331120 - Stainless Steel 3:1 Ratio Pump

PM2, 1:1 Ratio Suction Pump

Pumpmaster2, 1:1 ratio suction pump with a modified air valve to allow a lower upward movement of the piston to improve suction capacity and avoid pump cavitation when suctioning fluids like waste oil through small diameter suction canes.

351121 - 1:1 Ratio Suction Pump



Air Operated AdBlue®/DEF Pumps & Kits



Air Operated AdBlue®/DEF Diaphragm Pumps

Air operated plastic Directflo® pumps for dispensing AdBlue®/DEF.

553164 - DF30 Diaphragm Pump - 38 litre/min

552164 - DF50 Diaphragm Pump - 50 litre/min

551164 - DF100 Diaphragm Pump - 100 litre/min

Air Operated AdBlue®/DEF Diaphragm Pump Kits

Air operated plastic Directflo® pump kits for dispensing AdBlue®/DEF. Includes pump, nozzle, pump bracket, CSC quick coupling and EPDM hoses.

557950 - Drum Mounted Pump Kit with DF50 pump and manual nozzle

557951 - Drum Mounted Pump Kit with DF50 pump and automatic nozzle

559011 - Wall Mounted Pump Kit with DF50 pump



Air Operated AdBlue®/DEF Mobile Units

AdBlue®/DEF mobile dispenser with Directflo® pump, digital meter, nozzle and optional hose reel.

557952 - DF30 Diaphragm Pump and Air Hose Reel

557953 - DF30 Diaphragm Pump (no reel)



Electric AdBlue®/DEF Pumps & Kits



Electric AdBlue®/DEF Pumps

12 v, 24 v DC and 230 v AC multi-diaphragm pumps with no mechanical seals designed for dispensing AdBlue®/DEF. Pumps are self-priming and have a by-pass valve. Electric motors have IP55 protection and include on/off switch, fuse and 2 m cable with crocodile clips or plug.

560230 - 230 v 50 Hz AC - 400 w - 30 l/min

560215 - 120 v AC - 500 w - 30 l/min

560224 - 24 v DC - 310 w - 32 l/min

560212 - 12 v DC - 260 w - 32 l/min

Electric AdBlue®/DEF Pump Kits

For IBCs and drums. All kits include pump, pump bracket, nozzle, suction accessories and optional in-line meter. Available in 230 v 50 Hz AC, 12 v DC and 24 v DC.

Please contact us for details



Electric AdBlue®/DEF Mobile Units

AdBlue®/DEF mobile dispenser units for drums with electric pump, digital meter, nozzle and optional cable reel.

560307 - Mobile Dispenser and Cable Reel

560308 - Mobile Dispenser (no reel)

Hose Reels



RM-12 Open Hose Reels

Double pedestal, double arm hose reels - 10 m capacity. Suitable for air, water, antifreeze solutions, synthetic and mineral oils and grease.

Please contact us for details

RM-12S Single Arm Hose Reels

Single arm aluminium hose reels - 10 m & 15 m capacity. Suitable for air, water, antifreeze and windscreen wash solutions, high pressure hot water, synthetic and mineral oils, AdBlue®/DEF and grease.

Please contact us for details



RM-12CLX Slim Enclosed Hose Reels

Totally enclosed slim hose reels - 10 m & 15 m capacity. Suitable for air, water, antifreeze and windscreen wash solutions, synthetic and mineral oils and grease.

Please contact us for details



RM-12CL Enclosed Hose Reels

Totally enclosed hose reels - 10 m & 15 m capacity. Suitable for air, water, antifreeze and windscreen wash solutions, high pressure hot water, synthetic and mineral oils, AdBlue®/DEF and grease.

Please contact us for details



Heavy-Duty Hose Reels



RM-12L Heavy-Duty Open Hose Reels

Double pedestal, double arm hose reels - 15 m capacity. Suitable for air, water, antifreeze and windscreen wash solutions, high pressure hot water, synthetic and mineral oils and grease.

Please contact us for details

RM-34 Intensive Duty Hose Reels

Full metal, intensive duty, double pedestal hose reels - 15 m & 20 m capacity. Suitable for air, water, antifreeze and windscreen wash solutions, synthetic and mineral oils, AdBlue®/DEF, waste oil evacuation, diesel and grease.

Please contact us for details



RM-100 Heavy-Duty Large Capacity Reels

Full metal, intensive duty, double pedestal hose reels - 15 m, 20 m, 25 m and 30 m capacity. Suitable for air, water, antifreeze solutions, synthetic and mineral oils, waste oil evacuation and diesel.

Please contact us for details



RM-100 Heavy-Duty Large Delivery Reels

Full metal, intensive duty hose reel with 15 m x 1-1/2" capacity. Suitable for water and diesel.

Please contact us for details



Compact Reels for Air & Power



RM-38 Compact Reels for Air

Compact enclosed reels for compressed air, manufactured in steel. All reels include pivoting wall bracket for an easy and convenient installation. Reels supplied with PVC hose, maximum working pressure of 15 bar (285 psi).

500115 - Compact air reel - 15 m x 8 mm hose

500116 - Compact air reel - 12 m x 10 mm hose



RM-POWER Cable Reels

Compact reels with high resistance thermoplastic enclosure. Compact design, with wide outlet for a comfortable and friction free cable extension. All reels include pivoting bracket, cable specified for each model, and cable overload breaker. For use with 230 v - 50 Hz only.

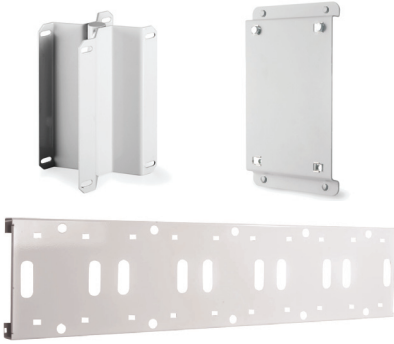
612400 - 230 v, 50 Hz Cable Reel with 230 v AC to 24 v DC Transformer with LED lamp

612100 - 230 v, 50 Hz Cable Reel

612200 - 230 v, 50 Hz Cable Reel with 230 v AC to 24 v DC Transformer

612300 - 230 v, 50 Hz Cable Reel with 230 v AC to 12 v DC Transformer

Hose Reel Accessories



Hose Reel Brackets

Single and multiple hose reel brackets available.

Please contact us for details

Gun Holders & Drip Pockets

Various dispensing gun holders and drip pockets available.

Please contact us for details



Hose Reel Stands

Various hose reel stands available.

Please contact us for details



Oil & Fluid Dispense Valves



PA40 Oil Control Valve - 40 litre/min

Control gun used to dispense synthetic and mineral based lubricants, gear oil, hydraulic oil and fluids, ATF and antifreeze solutions. Available with various nozzles.

Please contact us for details



EC30 Metered Control Valve - 30 litre/min

Metered control gun for measured dispensing of synthetic and mineral based lubricants, gear oil, hydraulic oil and fluids, ATF and antifreeze solutions. Available with various nozzles.

Please contact us for details



PA70 High Flow Control Valve - 70 litre/min

Large delivery control gun used to dispense synthetic and mineral based lubricants, gear oil, hydraulic oil and fluids, ATF and antifreeze solutions. Available with 3/4" or 1" inlet thread swivel.

Please contact us for details

EC70 High Flow Metered Control Valve - 70 litre/min

Large delivery metered control gun for measured dispensing of synthetic and mineral based lubricants, gear oil, hydraulic oil and fluids, ATF and antifreeze solutions. Available with 3/4" or 1" inlet thread swivel.

Please contact us for details



MC30 OG - Mechanical Metered Control Valve - 30 litre/min

Mechanically metered control gun for measure dispensing of synthetic and mineral based lubricants, gear oil, hydraulic oil and fluids, ATF and antifreeze solutions. Available with various nozzles.

Please contact us for details

Water & Grease Control Guns



Hose End Meter for Water Based Fluids

Hose end meter with electronic display for measured delivery of windscreen wash, coolant and antifreeze solutions.

365575 - Hose end meter for water based fluids

Delivery Gun for Water Based Fluids

Delivery gun with reinforced polyamide body and stainless steel valve mechanism for use with fluids like windscreen wash solutions, glycol solution (antifreeze) and other water based solutions,

186300 - Delivery gun for water based fluids



Water Guns

For use with water and antifreeze solutions.

186000 - Water Gun

186010 - Water Bib

185001 - Wash Gun

Grease Control Guns

High pressure grease control guns with ergonomic body and trigger designed to reduce operator hand fatigue.

Various options available.

413077 - Grease control gun with rigid outlet and 3 jaw connector

413080 - Grease control gun with z-swivel with rigid outlet and 3 jaw connector

413081 - Grease control gun with rubber hose and 3 jaw connector

413082 - Grease control gun with z-swivel with rubber hose and 3 jaw connector



NEX·U

FLUID MANAGEMENT SYSTEM



NEX·U. provides you with the control and the information you require to make your operation more profitable.

You will be able to account for every drop of lubricant and other service fluid used. On top of this, you will carry an efficient inventory control, with automatic alerts.

For almost any lubricant usage or operation size, with today's high cost for these fluids, NEX·U·® quickly pays for itself. Once it is paid for, savings go right to the operation's bottom line in form of profit previously lost.

NEX·U·® is a hybrid system that brings you all the advantages of wireless flexibility and hard-wired reliability.

NEX·U·® Central Processing Unit.

Controls and manages all components functions and communications, wired or wireless



U·Net

NEX·U·® software.

Included in the U·net, is the user and system interface. Generates useful reports, keeps control of inventory and can communicate with almost every DM system.



U·track

System keypad.

With a full colour, touch screen and a full QWERTY keypad provides full access to NEX·U·® and U·track.



U·dat



U-valve

All in one flow control unit.

Includes pulse meter, solenoid valve, filter and electronic circuit board for operation control and communication with other system components



U-vision+

Hand-held display with system access keypad



U-tank

Provides real-time inventory control and manages different alarm points, in conjunction with tank level sensors.



U-tank Basic

Standalone tank controller capable to control up to 4 different inputs from digital level gauge and four 24 V DC outputs, one per each input. Each output can be connected to 24 V DC solenoid valves, remote alarms, flash lights, etc.

The system can be used to prevent tank overflow (maximum level sensor) or to prevent pump running dry and air entering the oil distribution lines (low level sensor).

All you need to control your fluid inventory

For more information

Please contact your sales representative for assistance building and quoting this system.

Waste Oil Equipment



Combined Waste Oil Suction & Gravity Collection Unit - with transparent chamber

Units with a 10 litre transparent chamber that can be used as a vacuum reservoir and allows an immediate inspection of the extracted waste oil. Can be used remotely once vacuum is created inside the steel reservoir. Discharge through a 1.5 m discharge hose pressurising the unit.

372000 - 100 Litre Capacity

373000 - 70 Litre Capacity

Combined Waste Oil Suction & Gravity Collection Unit

Can be used remotely once vacuum is created inside the steel reservoir. Discharge is done through a 1.5 m discharge hose pressurising the unit.

372500 - 100 Litre Capacity

373500 - 70 Litre Capacity



Gravity Collection with Pressure Discharge

Discharge is done through a 1.5 m hose pressurising the unit at 0.5 bar (3.5 psi).

372400 - 100 Litre Capacity

373400 - 70 Litre Capacity

Gravity Collection with Pump Discharge

Discharge is done through a 1:1 pressure ratio pneumatic pump attached to the back of the unit reservoir and 1.5 m hose with hydraulic type coupler.

372200 - 100 Litre Capacity

373200 - 70 Litre Capacity



Waste Oil & Fluid Equipment



Motorcycle Waste Oil Drainer - 35 Litre

Unit incorporates a low profile pivoting bowl for gravity collection from motorbikes or service lifts. When the unit is connected to a compressed air supply, the waste oil is automatically discharged through an open-end 1.5 m hose. 35 litre capacity.

437300 - Motorcycle Waste Oil Drainer

Pit Rolling Drainer - 95 Litre

Rolling drainer for being installed between pit rails with min/max width of 1040 mm/1450 mm. 95 litre capacity. Unit includes anti-splash grid, four vertical and four horizontal rollers for easy rolling and a 1-1/4" outlet with ball valve. The unit allows the connection of a hydraulic connector for discharging the unit, once full, with a discharge pump kit.



439100 - Pit Rolling Drainer - 95 Litre



Low Level Mobile Drainer

Low level mobile drainer for gravity collection of waste oil. Recommended to use when a lift or a service pit is not available. Gravity discharge through a drain valve or using an evacuation pump through a dry break hydraulic connector (not included).

435000 - Low Level Drainer - 20 Litres

436000 - Low Level Drainer - 70 Litres

Anti-freeze Recovery Unit

Low level waste drainer equipped with a DF50 diaphragm pump. Allows draining the anti-freeze when a pit or lift is not available. Thanks to the diaphragm pump and the delivery gun it is possible to re-use the anti-freeze.

436100 - Anti-freeze Recovery Unit - 95 Litres



Waste Oil Evacuation Pumps

Waste Oil Evacuation Pump Kit - Diaphragm

DF100 double diaphragm pump kit for discharging waste oil drainers through a hydraulic coupler

559101 - Waste Oil Evacuation Diaphragm Pump Kit



Waste Oil Evacuation Pump Kit - Piston Pump

Pumpmaster 2, 1:1 pressure ratio piston pump kit for discharging waste oil drainers through a hydraulic coupler.

379100 - Waste Oil Evacuation Piston Pump Kit

Waste Oil Drain & Evacuation Kit for Construction and Mining Vehicles

15 m x 1" high volume hose reel with its inlet hose connected to a DF100 double diaphragm pump. The kit is used for clean, fast and efficient waste oil evacuation from large construction and mining vehicles when connected to the vehicle's engine with a connector compatible with the one on the vehicle's drain plug.

559111 - Waste Oil Evacuation Kit for Construction & Mining Vehicles



Evacumaster Waste Oil Suction Unit

Single point waste oil suction unit for collecting waste oil directly from the vehicle's engine using a suction cane inserted into the engine oil dipstick tube. The unit is installed alongside the service bay and provides the cleanest method for waste oil collection.

379711 - Wall Mounted Waste Oil Suction Unit

379710 - Pedestal Mounted Waste Oil Suction Unit

Waste Oil Equipment Accessories

Waste Oil Collection Bowls

372002 - Collection Bowl for 100 litre waste oil receivers (includes oversized extension)

373002 - Collection Bowl for 100 litre waste oil receivers

743305 - 20 litre Collection Bowl for empty drums



Waste Oil Suction Hose Reels

For use with EVACUMASTER units.

506503 - 6 m x 5/8" Single Arm Waste Oil Reel

507503 - 6 m x 5/8" Enclosed Waste Oil Reel

Suction Canes and Adaptors

Various canes and adaptors for use with waste oil units.

737950 - Suction canes & adaptors set

737972 - Suction canes & adaptors set with canes holder



Four-Way Evacuation Valve

Simplifies plumbing and allows the use of one pump to pull and push waste fluids on/off their storage tank with the swing of a handle.

361300 - Four-way Evacuation Valve

DC Diesel Pumps & Kits - Polux Series



12 v & 24 v DC Rotary Vane Pumps for Diesel

Self-priming pumps for self-adjustable vanes. Electric DC motor with IP55 protection allows intermittent operation duty with maximum cycles of 30 minutes.

684530 - 12 v DC - 22 A - 140 w - 0.8 bar - 40 l/min

684451 - 12 v DC - 38 A - 220 w - 0.8 bar - 60 l/min

684531 - 24 v DC - 13 A - 160 w - 0.8 bar - 43 l/min

684450 - 24 v DC - 25 A - 240 w - 0.8 bar - 65 l/min



12 v Diesel Transfer Pump Kits

Portable transfer kit with 12 v DC pump, delivery hose, nozzle, meter, fittings and suction kit depending on model.

Please contact us for details



24 v Diesel Transfer Pump Kits

Portable transfer kit with 24 v DC pump, delivery hose, nozzle, meter, fittings and suction kit depending on model.

Please contact us for details

AC Diesel Pumps & Kits - Polaris Series



230 v AC - 50 Hz Rotary Vane Pumps for Diesel

Self-priming pumps with self-adjustable vanes. Electric AC motor with IP55 protection, allows continuous operation duty,

685720 - 230 v AC - 2.2 A - 370 w - 1.7 bar - 50 l/min

685721 - 230 v AC - 3 A - 500 w - 1.7 bar - 70 l/min

685722 - 230 v AC - 4.6 A - 750 w - 1.7 bar - 95 l/min



230 v AC - 50 Hz Diesel Transfer Pump Kits

230 v AC Polaris Series pump kits include delivery hose and nozzle, fittings and suction kit depending on model.

Please contact us for details.



230 v AC - 50 Hz Diesel Transfer Pump Kits with Meter

230 v AC Polaris Series pump kits with mechanical meter, delivery hose, fittings, nozzle and suction kit depending on model. Meter valid for non-commercial applications only.

Please contact us for details.



AC Diesel Pump Kits - Wall Mounted



Wall Mounted Transfer 230 v Pump Kits

50 or 70 l/min Polaris Series pump on a bracket for wall or tank mounting. Kit includes pump with on/off switch, wall mounting bracket, 4 m delivery hose, nozzle and three digit meter. Meter valid for non-commercial use only.

Please contact us for details



Wall Mounted 230 v Pump Cabinets

50 or 70 l/min Polaris Series pump in a cabinet for wall or tank mounting. The unit includes pump, cabinet with nozzle holder with automatic on/off switch, 4 m delivery hose, automatic nozzle and a three digit meter. Meter valid for non-commercial use only.

685712 - 50 l/min

685715 - 70 l/min



230 v Pump Lockable Cabinets

50 or 70 l/min Polaris Series pump in a cabinet with safety lock for wall or tank mounting. Unit includes pump, cabinet with nozzle holder with automatic on/off switch, 4 m delivery hose, automatic nozzle and a three digit meter. Meter valid for non-commercial use only.

685777 - 50 l/min

685778 - 70 l/min

Diesel Pump Accessories



Diesel Meters

Nutating-disk meter for diesel with mechanical register. Very low pressure drop; it can be used for gravity fed applications. Max. working pressure: 10 bar. Flow range: 20 to 100 l/min. Meter valid for non-commercial use only.

680300 - Diesel Meter with 3 Digit Register

680301 - Diesel Meter with 4 Digit Register

Diesel Nozzles

Range of manual and automatic diesel nozzles.

361000 - Aluminium manual nozzle - 100 litre/min

689910 - Thermoplastic manual nozzle - 80 litre/min

688300 - Aluminium automatic nozzle - 60 litre/min

688001 - Aluminium automatic nozzle - 80 litre/min

688100 - Aluminium automatic nozzle - 120 litre/min



Diesel Filters

When fitted at the pump outlet they eliminate dirt up to 30 microns and the water contained in the diesel.

689090 - 65 litre/min diesel filter - 1" BSP (F)

689098 - 110 litre/min diesel filter - 1" BSP (F)

689091 - Replacement cartridge for 689090

689099 - Replacement cartridge for 689098

Diesel Hoses

Rubber hose with metal swaged 1" BSP (M) fittings.

689021 - 4 m x \varnothing 19 mm

689022 - 4 m x \varnothing 25 mm

689023 - 6 m x \varnothing 19 mm



Oil Pumps with Electric Motor - Flowstar Series



Oil Pumps with 12 and 24 v DC Electric Motor

External gear pumps with 12 and 24 v DC motors with IP55 protection, on/off switch, fuse and 2 m cable with crocodile clips. Pumps can work in intermit duty cycles of 30 minutes and has built in by-pass valve.

561012 - 12 v DC - 200 w - 11.5 bar - 5.2 l/min

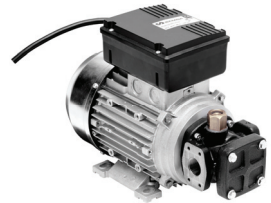
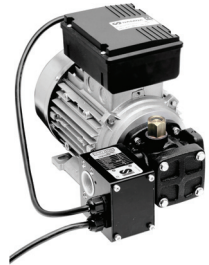
561024 - 24 v DC - 200 w - 12.5 bar - 5.6 l/min

Oil Pumps with 230 v AC and 400 v AC Motors

Internal gear electric pumps for lubricants. 230 v - 50 Hz (single phase) or 400 v -50 Hz (three phase) motor depending on model. IP55 protection and on/off switch. Cast iron pump body, sintered steel gears and by-pass valve.

Models with electronic pressure switch start automatically whenever a pressure drop in the distribution line occurs (i.e. when a delivery gun is opened) and stops once pressure is built up again in the line (i.e when a delivery gun is closed).

Please contact us for details



High Performance Oil Pumps with Electric Motor

High performance external gear pumps directly coupled to an electric motor with IP55 protection for the transfer or distribution of large volumes of lubricants. Pump gears are manufactured in steel and pump body is manufactured in cast iron. All pumps include adjustable by-pass valve.

Please contact us for details

Electric Oil Pump Kits



Electric Oil Pump Portable Kits

Pump kits includes pump, 3 m delivery hose, delivery gun and suction accessories. Available with a choice of 12 v DC, 24 v DC or 230 v AC pumps.

562000 - 230 v AC - 10 litre/min - 10 bar + Metered Control Gun

562010 - 230 v AC - 11 litre/min - 24 bar + Metered Control Gun

561014 - 12 v DC - 5.2 litre/min - 11.5 bar + Control Gun

561013 - 12 v DC - 5.2 litre/min - 11.5 bar + Metered Control Gun

561026 - 24 v DC - 5.6 litre/min - 12.5 bar + Control Gun

561025 - 24 v DC - 5.6 litre/min - 12.5 bar + Metered Control Gun

Mobile Oil Dispensers for 205 Litre Drums with 230 v Pump

Mobile oil dispenser with Flowstar Series electric pump. Includes connection accessories, hose end meter and trolley for 205 litre drums.

562100 - Mobile Oil Dispenser with 230 v Pump



Grease Nipples, Connectors, Nozzles & Accessories



Grease Nipples

A wide range of hydraulic, flush type, concave type, hexagon head, double hexagon and round head nipples.

Please contact us for details

Thread Gauges

070000 - Metric Thread Gauge

070001 - Whitworth & BSP Thread Gauge

070002 - SAE & BSF Thread Gauge



Grease Connectors

For use with hydraulic grease fittings. All connector heads, contact surfaces and jaws are manufactured in hardened steel.

Please contact us for details.



Grease Stems & Outlet Hoses

Various grease stems and rubber outlet hoses available.

Please contact us for details.

Hand Held Grease Pumps

500 cc Lever Action Grease Pumps

Universal grease pumps to be used with 400 g grease cartridges or with bulk grease. Bulk grease loading by suction or using a filler pump. Individually boxed.



101202 - With filler valve

101200 - With filler valve, rigid stem and four jaw connector

101240 - With filler valve, flexible stem and four jaw connector

101211 - Packed in plastic bag with rigid stem and four jaw connector

100900 - 500 cc Lever Action Grease Pump with variable stroke

500 cc Pistol Grip Grease Pumps

Pistol grip grease pump for hard to reach lubrication points. Three way loading: 400 g grease cartridges, bulk grease suction or filler pump. Heavy duty cast iron head with precision fit piston. Individually boxed.

106200 - With filler valve, rigid stem and four jaw connector

106240 - With filler valve, flexible stem and four jaw connector



Hand Held Air Operated Grease Pumps

High pressure, 60:1 pressure ratio, air operated grease pumps. They can be connected to a compressed air line or to the air brake circuit of a commercial vehicle.

167500 - 1000 cc Air Operated Grease Pump

168600 - 500 cc Air Operated Grease Pump

168601 - 500 cc Air Operated Grease Pump with rigid outlet and four-jaw connector



Other Grease Pumps available - please contact us for details

Manual Grease Pump and Filler Pumps



Grease Gun Filler Pumps

For quick, clean and easy loading of hand, air or battery operated grease guns fitted with a filler valve. Each unit includes a medium pressure lever action pump with two loader fittings that fit the more popular filler valves (\varnothing 9 mm and \varnothing 12.5 mm), drum cover and follower plate.

108000 - Grease Gun Filler Pump for 12 - 18 kg Kegs

108050 - Grease Gun Filler Pump for 20 kg Kegs

108100 - Grease Gun Filler Pump for 50 kg Drums

Filler Pumps for Centralised Greasing Units

Medium pressure lever action pump with 1.5 m hose and a 2-HK (1/4") hydraulic connector for filling the reservoir of centralised greasing systems. Includes pump, cover, hose and hydraulic connector.

108501 - Filler Pump for 12 - 18 kg Kegs

108502 - Filler Pump for 20 kg Kegs

108503 - Filler Pump for 50 kg Drums



High Pressure Grease Pumps

High pressure steel pumps to be mounted directly onto original grease kegs. Pump equipped with carrying handle cover with pump adaptor, follower plate and 1.5 m high pressure hose with rigid stem and four-jaw connector.

151100 - High Pressure Grease Pump for 12.5 - 18 kg Kegs

151102 - High Pressure Grease Pump for 20 kg Kegs

Pedal Action Grease Pump - 5 kg

Pedal action heavy duty grease pump. Spring primed follower plate and cast iron pump mechanism ensures that the pump can be used with extremely viscous grease. Steel leak proof reservoir, can hold up to 5 kg of grease. Includes air bleeder valve and 2 m high pressure grease hose with four jaw connector with check valve.

157000 - Pedal Action Grease Pump



Bucket Pumps & Drum Pumps for Oil



Bucket Pumps

Bucket pumps include a 16 litre leak proof, all steel oval shaped bucket with carrying handle and foot rest for easy handling and stability.

150000 - Multi-pressure Grease Bucket Pump - 16 kg

320400 - Oil Bucket Pump - 16 Litre

Medium Pressure Pumps

Lever action transfer pumps for high viscosity lubricants. Pump includes 2" height adjustable bung adaptor to fit directly onto drums, covers or containers. Pump with steel suction tube foot valve and piston and NBR seals, Available for a wide range of container sizes. Accessories also available.

Please contact us for details



Rotary Pumps

For transfer of light to medium viscosity petroleum based lubricants. Pumps include height adjustable bung adaptor, three piece suction tube and 1 m delivery hose.

308010 - Aluminium Rotary Action Drum Pump

308300 - Cast-iron Rotary Action Drum Pump

Lever Action Drum Pumps

Lever action drum pumps for the transfer of light lubricants or anti-freeze, depending on model.

304500 - Lever Action Drum Pump for light lubricants

304509 - Lever Action Drum Pump with Viton® Seals for anti-freeze



Gear Oil Dispensers and Other Manual Pumps



Gear Oil Dispenser

Suitable for 12 - 18 litre pails or 20 litre pails, complete with cover, 1.5 m hose with nozzle.

320300 - Gear Oil Dispenser for 12 - 18 Litre Pails

320310 - Gear Oil Dispenser for 20 Litre Pails

741602 - Carrying Handle for above

Gear Oil Units

Plastic lift pump suitable for gear oil. A range of adaptors to convert the 2" BSP thread to fit the various threads available on drums.

Please contact us for details



Stainless Steel Lift Action Pumps

Stainless steel lift action transfer pumps for aggressive fluids, solvent, degreasers, etc. Pump includes 2" height adjustable adaptor. Stainless steel pumps with Teflon® seals.

300600 - Lift Action Transfer Pump for 20 - 50 litre drums

300601 - Lift Action Transfer Pump for 205 litre drums

PVC Rotary Action Drum Pump

For the continuous transfer of acid-based corrosive fluids and water based fluids from 20, 50 or 205 litre drums. PVC pump with stainless steel shaft.

308200 - PVC Rotary Action Drum Pump - EPDM

300900 - Hose for PVC Rotary Pump - 1" x 2 m



Manual Pumps for Various Fluids



Lift Action Pumps for Chemical Fluids

Lift action pumps for various applications. Please check fluid compatibility with the pump prior to its use.

Please contact us for details

Plastic Lever Pumps

Lever action pumps with a unique toggle mechanism that provides a very smooth operation. Pumps are manufactured in polypropylene and include a 2" bung adaptor with a lockable nut that allows placing the pump in its optimal position for an easier lever action.

300006 - Lever Action Pump - EPDM Seals for AdBlue®/ DEF

300007 - Lever Action Pump - Viton® Seals for a wide range of chemicals

300009 - Lever Action Pump - NBR Seals for lubricants

300900 - Hose for Lever Pump - 1" x 2 m



Plastic Manual Syphon Pumps

Plastic manual syphon pumps for various fluids. Available for a wide range of applications.

300000 - for 5 - 10 litre drums

300100 - for 20 - 60 litre drums

300101 - for 205 litre drums

Connecting Adaptors

A range of adaptors to convert the 2" BSP thread to fit the various threads available on drums and barrels.

Please contact us for details



Funnels and Measures



Industrial Funnels

Range of plastic funnels for various applications.

670019 - Funnel with filter and flexible spout - 190 mm diameter, 2 litre capacity

670023 - Funnel with filter and flexible spout - 230 mm diameter, 3.5 litre capacity

671030 - Industrial funnel for diesel - 5 litre capacity

671031 - Industrial funnel for lubricants - 5 litre capacity



Funnels

Available in a range of sizes including 50 mm / 70 mm / 90 mm / 115 mm and 150 mm diameter.

Please contact us for details



Measures with Spout

Fluid measures for lubricants anti-freeze, brake fluid, petroleum, diesel, etc. Moulded in high density polyethylene with flexible spout. Plastic lids available to purchase separately - please contact us for details.

675001 - Plastic Measure - Graduated 0 - 1 litre

675002 - Plastic Measure - Graduated 0 - 2 litre

675003 - Plastic Measure - Graduated 0 - 3 litre

675005 - Plastic Measure - Graduated 0 - 5 litre



Graduated Measures

For lubricants, anti-freeze, brake fluid, petroleum, diesel, etc. Moulded in high density polyethylene.

Available in sizes - 0.1 litre, 1/4 litre, 1/2 litre, 1 litre, 2 litre, 3 litre, 5 litre and set of seven jugs.

Please contact us for details



Equipped Units for AdBlue® and Diesel



Equipped Trolleys for AdBlue®/DEF and Diesel

110 litre trolleys equipped with robust rotary pumps or electric pumps (depending on model) and 3 m hose with manual nozzle.

309201 - AdBlue®/DEF Trolley with manual pump

309011 - Diesel Trolley with manual pump

560311 - AdBlue®/DEF Trolley with electric pump

684515 - Diesel Trolley with electric pump



Equipped Tanks for AdBlue®/DEF and Diesel

220 litre and 440 litre equipped with electric pumps and 4 m hose with automatic nozzle to ease refilling tasks. Supplied with 12 v DC electric pump.

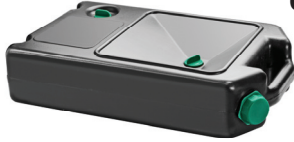
560312 - AdBlue®/DEF Tank with electric pump - 220 Litre

684516 - Diesel Tank with electric pump - 220 Litre

560313 - AdBlue®/DEF Tank with electric pump - 440 Litre

684517 - Diesel Tank with electric pump - 440 Litre

Gravity Drainers, Oil Cans and Jerry Cans



Gravity Drainers

673007 - Gravity Drainer - 7 litre

673014 - Gravity Drainer - 14 litre

673008 - Gravity Drainer for waste oils - 8 litre

Oil Cans

Metal and polyethylene bodied oil cans. Lever action. Armoured flexible spout.

176100 - Metal bodied oil can - capacity 200 cc

176200 - Metal bodied oil can - capacity 300 cc

176300 - Metal bodied oil can - capacity 500 cc

175200 - Polyethylene bodied oil can - capacity 300 cc

175300 - Polyethylene bodied oil can - capacity 500 cc

175400 - Polyethylene bodied oil can - capacity 750 cc

179500 - Armoured spout for all cans



Steel Jerrycans

Green colour with protective paint in the inside. With no outlet spout

622005 - 5 Litre Capacity - U.N. Approved

622010 - 10 Litre Capacity - U.N. Approved

622020 - 20 Litre Capacity - U.N. Approved

Options:

629001 - Painted outlet spout

629002 - Zinc plated outlet spout

629003 - Locking joint replacement



Plastic Fuel Cans and Barrel Taps



Red Plastic Fuel Cans

Red coloured plastic can with outlet spout for diesel.

621005 - 5 Litre Capacity - U.N. Approved

621010 - 10 Litre Capacity - U.N. Approved

621020 - 20 Litre Capacity - U.N. Approved

Green Plastic Fuel Cans

Green coloured plastic can with outlet spout for gasoline

621105 - 5 Litre Capacity - U.N. Approved

621110 - 10 Litre Capacity - U.N. Approved

621120 - 20 Litre Capacity - U.N. Approved



Metal Barrel Taps

Fit 60 to 205 litre drums placed horizontally. Taps include automatic shut-off valve.

318000 - Metal Barrel Tap - 3/4" BSP (M)

318001 - Metal Barrel Tap - 2" BSP (M)

Plastic Barrel Taps

Fit 60 to 205 litre drums placed horizontally. Taps include automatic shut-off valve.

318002 - Plastic Barrel Tap - 3/4" BSP (M)

318003 - Plastic Barrel Tap - 2" BSP (M)



Blow Guns, Wash Guns and Spray Guns



Industrial Quality Blow Guns

Aluminium blow guns with anti-slide grip. High air flow and wide range of accessories. Working pressure: 3 to 8 bar. Connection thread: 1/4" BSP (F). Includes extra-silent nozzle.

188000 - Blow Gun

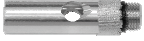
188100 - Compact Blow Gun

180801 - High Flow Nozzle

180802 - Extra-silent Nozzle

180803 - Anti-splash Protection

180800 - 150 mm Extension Tube



Thermoplastic Blow Guns

184200 - with metal nozzle - 1/4" BSP (F)

184201 - with metal nozzle and flow regulator - 1/4" BSP (F)

184250 - with silent nozzle - 1/4" BSP (F)



Wash Guns

Medium pressure, up to 30 bar, wash gun. Fitted with a \varnothing 3.5 mm nozzle as standard that can be replaced with a \varnothing 2.5 mm nozzle if a higher pressure flow is required. On/off and flow regulation knob. Inlet thread: 1/2" BSP (F)

185050 - Thermoplastic wash gun for use with water or compressed air - 1/4" BSP (F)

185001 - Metal wash gun with flow regulator

Industrial Spray Guns

187000 - Industrial Spray Gun - Metal Container

Min. - max. pressure: 3 to 10 bar, connection thread 1/4" BSP (F). Aluminium gun body and 1 litre aluminium container.

187001 - Industrial Spray Gun - Plastic Container

Min. - max. pressure: 3 to 10 bar, connection thread 1/4" BSP (F). Aluminium gun body, metal outlet and 1 litre plastic container.



Spray Guns and Tyre Inflators

Thermoplastic Spray Guns



Light spray gun manufactured in high quality chemical resistant thermoplastic. For spray cleaning using chemical products and spraying parts with corrosion protection fluids or lubricants. Capacity 1 litre.

184000 - with metallic long reach outlet

184050 - with thermoplastic outlet

184051 - with suction flexible

Brake Bleeding Gun

Economical gun for individual brake circuit bleeding in vehicles.

184100 - Brake Bleeding Gun



Fluid Suction Gun

As per our brake bleeding gun but includes a hose without bleeder nipple for sucking out fluids from hard to reach places. Can be used for waste oil suction in small boats, lawnmowers, etc.

184150 - Fluid Suction Gun

Tyre Inflator Guns

Various tyre inflator guns and accessories.

Please contact us for details



Pressure Gauges for Tyres

196100 - 0 - 4 Bar Pressure Gauge for Tyres

196000 - 0 - 10 Bar Pressure Gauge for Tyres

Air Treatment Units (FRLs)



Air Treatment Units - 1/4" & 1/2" Series (0-14 Bar)

Air Treatment Units - 3/4" Series (0-16 Bar)

Air Line Filters - to protect valves, pump motors or pneumatic tools from damage or wear caused by dirt and moisture contained in compressed air. Semi-automatic bleeding valve.

Pressure Regulator - to maintain a selected air pressure constant eliminating over pressure risks and erratic operation of equipment. Also available combined with an air filter forming a compact unit.

Air Line Lubricators - to create an oil mist that helps increase service life of pumps and other air tools. Oil fill port on top and oil mist adjustment knob.

Please contact us for details



Polyurethane & Polyamide Air Hoses

Hoses for use in air lines with blow guns or pneumatic tools. Include swivel male adaptors and dock on end part to protect it.

Rubber Air Hoses

Low pressure hoses for compressed air with female swaged fitting and a double male adaptor.

Please contact us for details

Bulk Storage Tanks



Totally Enclosed Bunded Tanks

Steel construction storage tanks for lubricants and waste oil. Tanks can be manufactured to customer requirements and comply with environmental guidelines.

Waste oil tanks include an internal suction pipe.

Please contact us for details



Bespoke Tanks

Bespoke oil and fluid storage tanks and bunds can be manufactured to most requirements. Tanks with secure cabinets contain hose reels and pumps. Specialist dispensing systems can also be manufactured.

Please contact us for details



Offset Cabinets & Ancillaries

Floor or wall mounted steel offset fill cabinets available for single or multiple points. Come complete with ancillaries.

Please contact us for details

Tank Alarm Units



Level Control Master System II

240 v mains powered audible and visual alarm unit for high and low level warnings. Each unit is suitable for connection to a maximum of 3 tanks. Ideal for clean or waste oil.

392200201 - 240 v Tank Alarm Unit

Level Control Master Accessories

- 382201200 - High Level Warning Probe**
- 382201203 - High/Low Level Warning Probe**
- 382202200 - Bund Low Level Warning Probe**
- 382203200 - External Siren**
- 382203202 - Amber Beacon**



Utank Basic Tank Monitoring Unit

240 v mains powered stand alone tank monitoring unit. Controls up to 4 channels. Each channel can be assigned to a different tank, or multiple channels can be assigned to a single tank. Integrates an acoustic alarm (buzzer type).

Each channel has a digital input (for contact probes) that triggers a 24 v DC output (for controlling solenoid valves, relays, external audible/visual alarms). Single button for setup. Key switch for bypass mode control.

The system can be used to prevent tank overflow (maximum level sensor) or to prevent pump running dry and air entering the oil distribution lines (low level sensor).

383101 - Utank Basic

*Stand-alone unit, cannot be integrated into a NEX.U. system



Utank Basic Accessories

- 382201 - Adjustable Tank Level Gauge**
- 382005 - Remote Flash & Acoustic Alarm**
- 389016 - Solenoid Valve for Compressed Air/Pump Control**



Battery Powered Pumps



Small Battery Operated Hand Pump

Requires 2 x D batteries (not included). Suitable for pumping a wide range of fluids including water, kerosene, gasoline, diesel, AdBlue[®]/DEF, anti-freeze and windscreen wash solutions, mild detergents, agricultural chemicals and light oils. 10 litres/min. Comes complete with 79cm outlet hose.

591600 - Small Battery Operated Hand Pump

Dual Power Mega-Pump

Powered by either 12 v DC or 230 v AC (with transformer). Delivery volume approximately 19 litre/min with AC adaptor. Suitable for diesel, AdBlue[®]/DEF, water, kerosene, anti-freeze and windscreen wash, mild detergents, agricultural chemicals and light oils. Suction tube: 850 to 1245 mm. Discharge hose length: 2 m. Accessories: DC cable clips - crocodile clips connect pump to batteries (e.g. cars, vehicle, etc), DC cable approximately 4 m. AC/DC adaptor - AC cable approximately 1 m.

G3325 - Dual Power Mega-Pump



Compact Dual Power Multi-Fluid Pump

Powered by either 12 v DC or 230 v AC (with transformer). Delivery volume approximately 16 litre/min (with water). Suitable for use with diesel, AdBlue[®]/DEF, water, kerosene, anti-freeze and windscreen wash, mild detergents, agricultural chemicals and light oils. Suction tube: 575 to 865 mm. 2" BSP to Trisure adaptor included. Accessories: DC cable clips - crocodile clips connect pump to batteries (cars, vehicles, etc). DC cable approximately 4 m. AC/DC adaptor - AC cable approximately 1 m.

G3326 - Compact Dual Power Multi-Fluid Pump



Spill Pallets



Spill Pallets

Spill pallets for 1, 2 or 4 drums for static spill containment. Removable platform. Remove drums before forklifting. Compatible with most forklifts and drum pallet trucks. Made from 100% polyethylene.

- EP1001 - 1 x 205 Litre Drum Spill Pallet - 230 litre capacity**
- EP1002 - 2 x 205 Litre Drum Spill Pallet - 250 litre capacity**
- EP1004 - 4 x 205 Litre Drum Spill Pallet - 250 litre capacity**
- EP1005 - 4 x 205 Litre Drum Spill Pallet - 485 litre capacity**
- EP1003 - 4 x 205 Litre Drum Spill Pallet - 235 litre capacity**
- EP1006 - 2 x 205 Litre Drum Spill Pallet - to fit a Europallet**

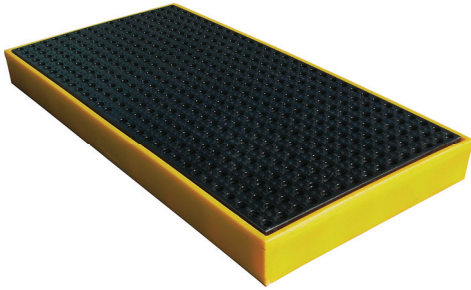


Covered Spill Pallets

Rigid, double walled, chemical resistant and weathertight PE hardcover. Accessible to both sides via two tough, flexible easy sliding shutter doors.

- EP9002 - 2 x 205 Litre Covered Drum Spill Pallet - 230 litre capacity**
- EP9004 - 4 x 205 Litre Covered Drum Spill Pallet - 250 litre capacity**
- EP9006 - 4 x 205 Litre Covered Drum Spill Pallet - 485 litre capacity**

Work Floors and Spill Trays



Work Floors

PE work floors for 2 or 4 drums. Can be used for static spill containment and as liquid dispensing area. Units can be joined together to provide larger work areas.

Heavy duty PE access ramps lock onto work floor with integrated locating pins, user friendly gradient for easy loading. Slip resistant texture on ramp and platforms.

EP3010 - Work Floor Ramp

EP3001 - Work Floor for 2 x 205 Litre Drums

EP3006 - Work Floor for 4 x 205 Litre Drums

EP3007 - Work Floor Cross-Connector Piece - 700 mm

EP3008 - Work Floor Cross-Connector Piece - 1500 mm

EP3009 - Work Floor Cross-Connector



Spill Trays

PE spill trays for static spill containment. Removeable platform. Made from 100% polyethylene.

EP8001 - 20 Litre Spill Tray

EP8002 - 30 Litre Spill Tray

EP8003 - 40 Litre Spill Tray

EP8004 - 60 Litre Spill Tray

EP8005 - 100 Litre Spill Tray

IBC Storage and Drum Racks



IBC Storage

Single and double IBC spill pallets. Central supports always to be used when platforms in place. Easy to maintain and clean. Compatible with most forklifts and pallet trucks, use extensions when needed. Made from 100% polyethylene.

EP5000 - Single IBC Spill Pallet - no deck - 1120 litre capacity

EP5001 - Single IBC Spill Pallet - with deck - 1120 litre capacity

EP5003 - Twin IBC Spill Pallet - with deck - 1130 litre capacity

EP5007 - Dispenser for single IBC - 100 litre capacity

EP5008 - Dispenser for twin IBC - 100 litre capacity

EP5200 - Integrated dispenser single IBC - no deck - 1120 litre capacity

EP5250 - Integrated dispenser single IBC - with deck - 1120 litre capacity



Drum Racks

Drum rack base and drum rack, ideal for easy dispensing and storage.

Drum rack - max. stack of 2 (4 drums total). Drum rack to be used with drum rack base only. Compatible with most forklifts and drum pallet trucks. Made from 100% polyethylene.

EP2002 - Yellow drum rack

EP2003 - Yellow drum rack base - 450 litre capacity

Drum Funnels



Drum Funnels

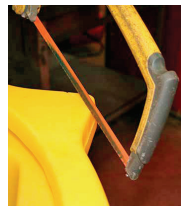
Drum funnel with lid, compatible with standard 205 litre drums. Large capacity bowl to prevent overflows, supplied with stainless steel debris filter.

Made from 100% recyclable, UV & chemically resistant PE. Hinged lid prevents fillings with rainwater & debris when not in use. 250 degree lid opening allowing full access to drainage bowl. Optional plastic toggle latch.

EP6000 - Drum Funnel

EP6001 - Drum Funnel with toggle latch

EP6005 - Drum Tray





SAMOA

LEADING THROUGH INNOVATION

**SAMOA Ltd
Asturias House
Barrs Fold Road
Wingates Industrial Park
Westhoughton
BL5 3XP**

Tel: 01942 850600

©SAMOA Ltd - UK

Images for illustration purposes only.

Product specifications are subject to change without prior notice.