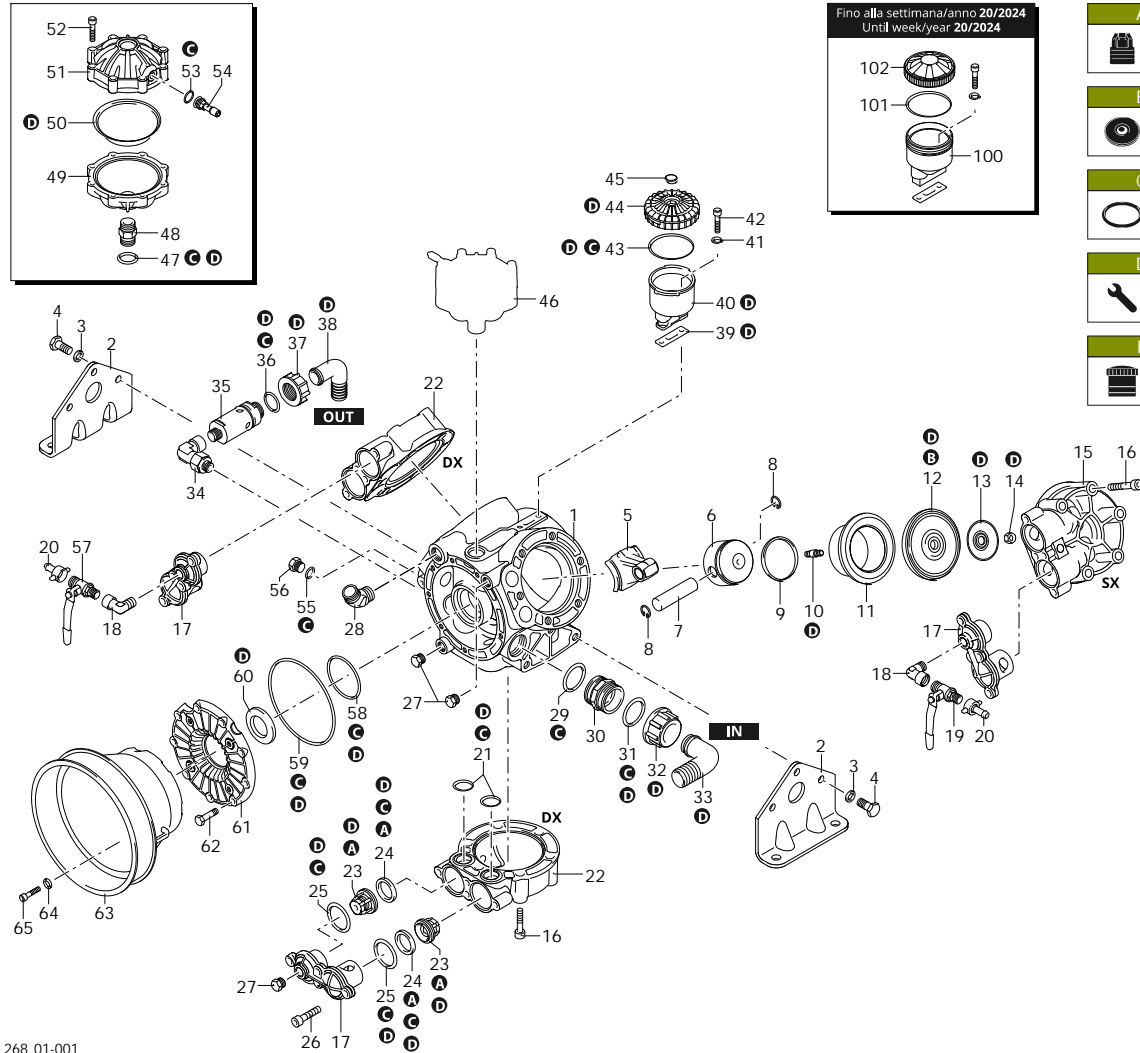




# AR 903

32111 AR 903 AP C/F Ø 1"3/8 - BlueFlex



268\_01-001

Customer: AR  
Customer Code:



SAE 30  
1,600 Kg

Revision: 1

Date: 25/03/2026

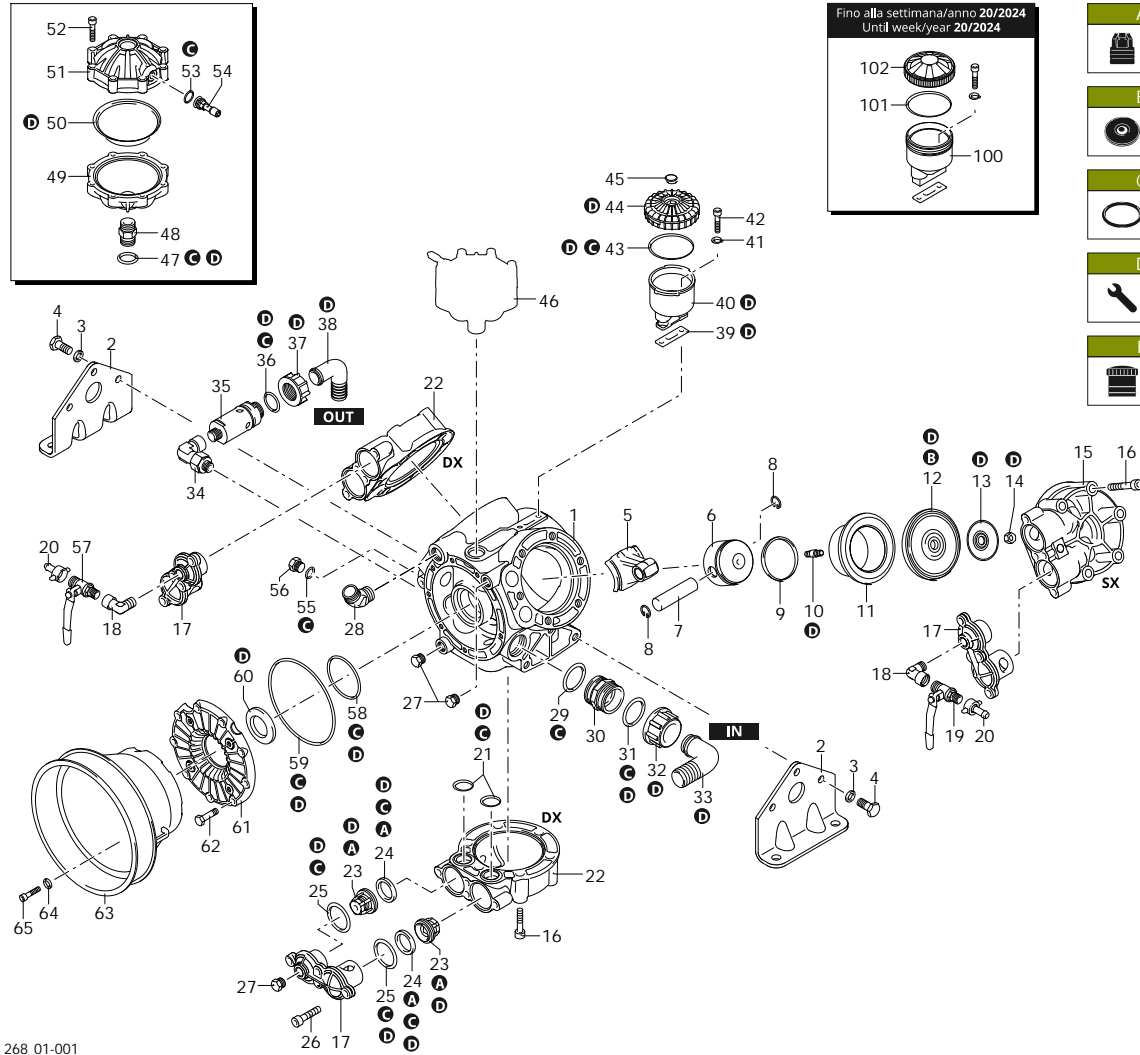
Validity: < XX/YY = From week/year

Code	Description	Q	Note	Validity
1	2680010 Pump body	1		
2	2680100 Foot	2		
3	250141 Washer	6		
4	540210 Screw	6	C=50Nm	
5	2680320 Connecting-rod	3	aluminium	
6	2240060 Piston	3	Ø 72	
7	260700 Pin	3		
8	160691 Ring	6	seeger Øi 18	
9	260230 Piston ring	3		
10	2240100 Hub pin	3	C=30Nm Loxeal 83-21	
11	2680060 Sleeve	3		
12	550081 Diaphragm	3	BlueFlex - Øe 115	
13	580090 Plate	3		
14	2240110 Nut	3	M10	C=25Nm
15	2680031 Head	1	sx	
16	750070 Screw	18	TE M12x70	C=50Nm
17	2680040 Cover	3		
18	900210 Fitting	2	3/8" G (M-F)	Loxeal 83-21
19	130491 Valve	1	3/8" G - 1/2" G (M-M)	Loxeal 55-14
20	110131 Hose tail	2	Ø 10	
21	1520650 O-ring	6	Ø 29,82x2,62	Lubricate with motor oil
22	2680030 Head	2	dx	
23	2689050 Valve	6		
24	180240 O-ring	6	Ø 31,34x3,53	
25	2680150 O-ring	6	Ø 42,52x2,62	Lubricate with motor oil
26	540300 Screw	12	TCEI M10x30	C=35Nm
27	130171 Plug	3	3/8" G	C=20Nm Loxeal 55-14
28	851650 Elbow	1		Loxeal 55-14
29	250310 O-ring	1	Ø 36,14x2,62	Lubricate with motor oil
30	540530 Fitting	1	1"1/4 G - 1"3/4 G (M-M)	
31	250310 O-ring	1	Ø 36,14x2,62	Lubricate with motor oil
32	540540 Ring nut	1	1" 3/4 G	
33	540550 Elbow	1	Ø 40	
34	2680310 Fitting	1		Loxeal 55-14
35	1609001 Safety valve	1	40 bar	Loxeal 24-18
36	880831 O-ring	1	Ø 15,54x2,62 Viton	Lubricate Molykote G-807
37	550450 Ring nut	1	3/4" G	
38	550460 Elbow	1	Ø 18	
39	750040 Gasket	1		Seal with Arexons Mastic
40	750031 Tank	1	with bayonet	
41	380241 Washer	2		
42	680350 Screw	2	TCEI M8x35	C=10Nm
43	580230 O-ring	1	Ø 69,52x2,62	
44	4700621 Plug	1	with bayonet - green	
45	751780 Plug	1		
46	43071 Air chamber	1	BlueFlex	
47	720030 O-ring	1	Ø 22,22x2,62	Lubricate Molykote G-807
48	2240490 Fitting	1		Loxeal 24-18



# AR 903

32111 AR 903 AP C/F Ø 1"3/8 - BlueFlex



268\_01-001

Customer: AR  
Customer Code:



SAE 30  
1,600 Kg

Revision: 1

Date: 25/03/2026

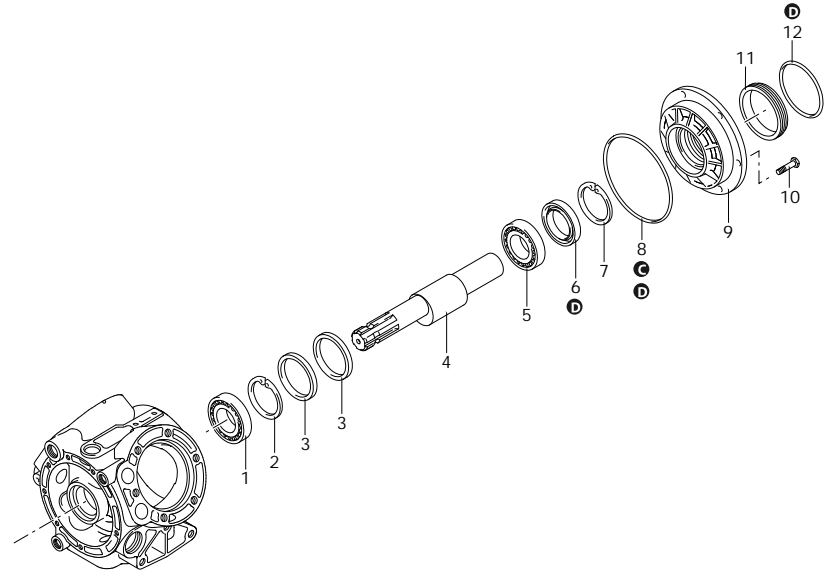
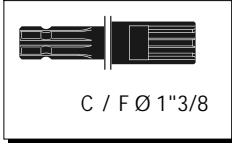
Code	Description		Q	Note	Validity
49	2240481 Semi air chamber	lower	1	Loxeal 83-21	
50	550194 Diaphragm	BlueFlex - Øe 110	1		
51	620234 Semi air chamber	upper	1		
52	380410 Screw	TCEI M8x40	8	C=20Nm	
53	650542 Gasket		1	Lubricate with motor oil	
54	180020 Air valve		1	C=3,5NmLoxeal 55-14	
55	180101 O-ring	Ø 17,5x2	1	Lubricate with motor oil	
56	820361 Plug	1/2" G brass	1	C=20Nm	
57	130492 Valve	3/8" G - 1/2" G (M-M)	1	Loxeal 55-14	
58	2240270 O-ring	Ø 26,65x2,62	1	Lubricate with motor oil	
59	1400120 O-ring	Ø 145,72x2,62	1	Lubricate with motor oil	
60	2680110 Ring	seal	1		
61	2680050 Line	intake	1		
62	180370 Screw	TCEI M8x25	9	C=20Nm	
63	1500470 Cardan protection	Ø 239 mm	1		
64	390311 Washer		3		
65	850250 Screw	TCEI M8x12	3	C=10Nm	
100	750030 Tank	threaded	1		< 20/24
101	1040060 O-ring	Ø 72,69x2,62	1	Lubricate Molykote Longterm W2	20/24
102	750050 Plug	threaded - red	1		< 20/24
A	42200 Valve kit		1		
B	43085 Diaphragms kit	BlueFlex	1		
C	42201 O-ring kit		1		
D	47412 Maintenance repair kit	BlueFlex	1		
E	47197 Tank kit		1		

Validity: < XX/YY = From week/year



# AR 903

32111 AR 903 AP C/F Ø 1"3/8 - BlueFlex



Code	Description	Q	Note	Validity
1	230350 Bearing	1	Press Mount	
2	230340 Ring	1	seeger Øi 80	
3	2240540 Ring	2	Connecting-rod	
4	2680200 Shaft	1	CD marked	
5	230310 Bearing	1	Press Mount	
6	2680130 Ring	1	seal	Lubricate with Mineral Grease
7	161050 Ring	1	seeger Øi 72	
8	1400120 O-ring	1	Ø 145,72x2,62	Lubricate with motor oil
9	2680021 Flange	1		
10	160670 Screw	6	TE M10x25	C=35Nm
11	2420250 Ring	1		
12	580230 O-ring	1	Ø 69,52x2,62	
A	42200 Valve kit	1		
B	43085 Diaphragms kit	1	BlueFlex	
C	42201 O-ring kit	1		
D	47412 Maintenance repair kit	1	BlueFlex	

268\_03-003

Customer: AR  
Customer Code:



Revision: 1  
Date: 25/03/2026

Validity: < XX/YY = From week/year