

## TE-5-MD-HC SERIES - 1/8 HP

### APPLICATIONS

The Little Giant MD-HC series features leakproof, seal-less magnetic drives and are designed for in-line, non-submersible use. Volute, magnet housing and impeller are glass-filled polyphenylene sulfide for excellent chemical resistance. Ceramic shaft and thrust washers are 99.5% pure alumina for excellent wear and trouble-free service. Pumping heads are easily rotated, cleaned or serviced with no special tools required. Spindle shaft is supported at both ends to prevent impeller damage during start-up and stop of pump.

### FEATURES

- Thermally protected, totally enclosed, fan cooled, permanent split capacitor motor
- Ball bearings
- 6-foot power cord with 3-prong plug (not installed)
- Specific gravity to 1.1
- Fluid temperature to 200 °F
- Ambient air temperature to 77 °F
- Run dry capability up to 8 hours

NOTE: Consult your local distributor or the factory for applications with higher ambient temperatures, specific gravities and viscosities.

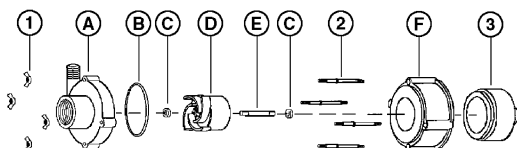


TE-5-MD-HC



### SERIES SPECIFICATIONS

Item No.	Model	Discharge Size	Intake Size	HP	Volts	Hz	Amps	Watts	Gallons per minute (Liter per minute) @ Height					Shut-Off	PSI	Cord	Weight lbs (Kg)
									1'	3'	6'	9'	15'				
584604	TE-5-MD-HC	1/2" MNPT	1" FNPT	1/8	115	50/60	1.8/3	220/325	20 (75.7)	19.2 (72.7)	18.2 (68.9)	17 (64.4)	14.8 (56.0)	29.3' (8.93 m)	12.7	6' (1.8 m)	16 (7.26 Kg)
		1/2" MNPT	1" FNPT		230	50/60	1.4/1.4	220/325	20 (75.7)	19.2 (72.7)	18.2 (68.9)	17 (64.4)	14.8 (56.0)	29.3' (8.93 m)	12.7		
584698	TE-5-MD-HC	Pump Head Less Motor														7 (3.18 Kg)	



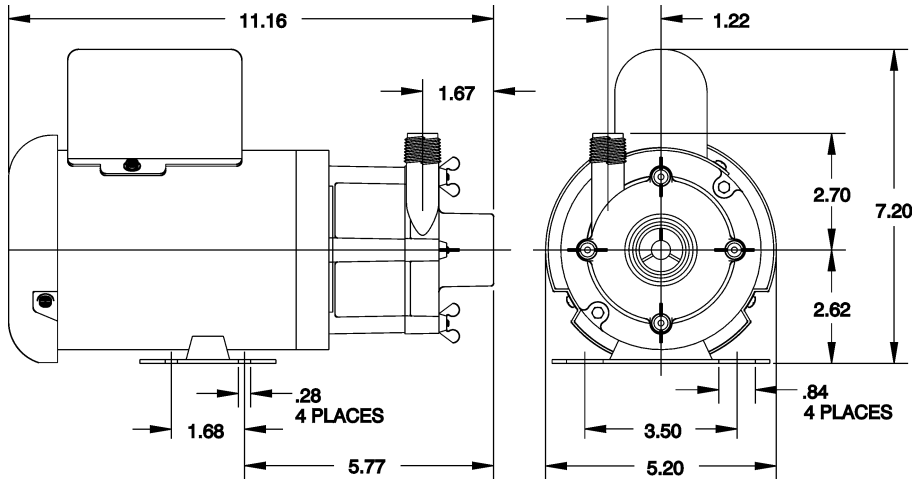
### REPLACEMENT PARTS

Item	Part No.	Description
A	183066	Volute
B	924008	O-ring
C	921077	Thrust washer
D	183141	Impeller/Bushing
E	180057	Shaft
F	182006	Housing
1	920003	Wing nut
2	911403	Stud, collared
3	183602	Drive magnet

NOTE: Parts A-F contact fluid

## TE-5-MD-HC SERIES - 1/8 HP

### ENGINEERING DATA



NOTE: Designs and dimensions may vary for various reasons (i.e. type of motor). This information should be used as general guide rather than an unqualified guarantee. Specifications are subject to change without prior notice.

### PERFORMANCE DATA

