

TE-6-MD-HC SERIES - 1/2 HP

APPLICATIONS

The Little Giant MD-HC series features leakproof, seal-less magnetic drives and are designed for in-line, non-submersible use. Volute, magnet housing and impeller are glass-filled polyphenylene sulfide for excellent chemical resistance. Ceramic shaft and thrust washers are 99.5% pure alumina for excellent wear and reliable service. Pumping heads are easily rotated, cleaned or serviced. Spindle shaft is supported at both ends to prevent impeller damage during start-up and stop of pump.

FEATURES

- Thermally protected, totally enclosed, fan cooled, split phase motor
- Ball bearings
- Conduit box (cord not included — must be field wired)
- Specific gravity to 1.1
- Fluid temperature to 180 °F
- Ambient air temperature to 77 °F
- Run dry capability up to 8 hours

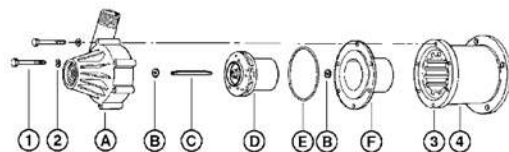
NOTE: Consult your local distributor or the factory for applications with higher ambient temperatures, specific gravities and viscosities.



TE-6-MD-HC

SERIES SPECIFICATIONS

Item No.	Model No.	Intake Size	Discharge Size	Listing(s)	HP	Volts	Hz	Amps	Watts	Gallons per minute (Liter per minute) @ Height					Shut-Off	PSI	Cord	Weight lbs (Kg)
										5'	10'	20'	30'	40'				
586604	TE-6-MD-HC	1" FNPT	3/4" MNPT	UR/C-CSA	1/2	115	50/60	11.6/9.4	340/525	38 (143.8)	36.7 (138.9)	31.7 (120)	28.3 (107.1)	21.7 (82.1 Kg)	51' (15.5 m)	15.54	N/A	28 (12.7 Kg)
						230	50/60	5.8/4.7	340/525	38 (143.8)	36.7 (138.9)	31.7 (120)	28.3 (107.1)	21.7 (82.1 Kg)	51' (15.5 m)	15.54		
586698	TE-6-MD-HC	1" FNPT	3/4" MNPT	Pump Head Less Motor													7 (3.18 Kg)	



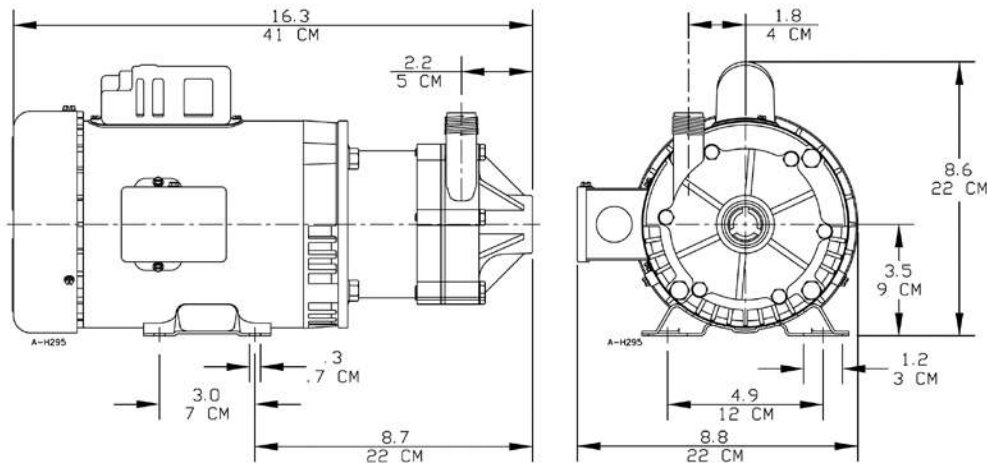
REPLACEMENT PARTS

Item	Part No.	Description
A	185114	Volute
B	187085	Thrust Washer
C	185100	Shaft
D	185158	Impeller/Bushing
E	924016	O-ring
F	185181	Backplate
1	903712	Bolt
2	921050	Washer
3	185172	Drive magnet
4	185162	Magnet Housing

NOTE: Parts A-F contact fluid

TE-6-MD-HC SERIES - 1/2 HP

ENGINEERING DATA



NOTE: Designs and dimensions may vary for various reasons (i.e. type of motor). This information should be used as general guide rather than an unqualified guarantee. Specifications are subject to change without prior notice.

PERFORMANCE DATA

