



INNOVATIVE WATER TRUCK SOLUTIONS



100|80
XHD

100X80XHD Series

DIRECT DRIVE WATER PUMP

MADE IN AUSTRALIA



100X80XHD Series

Water Pump

The 100X80XHD water pump is designed and manufactured in Australia specifically for water trucks. 10080XHD pumps offer **optimum performance for dust suppression applications**. Robust designs ensure maximum service life in the harshest conditions.

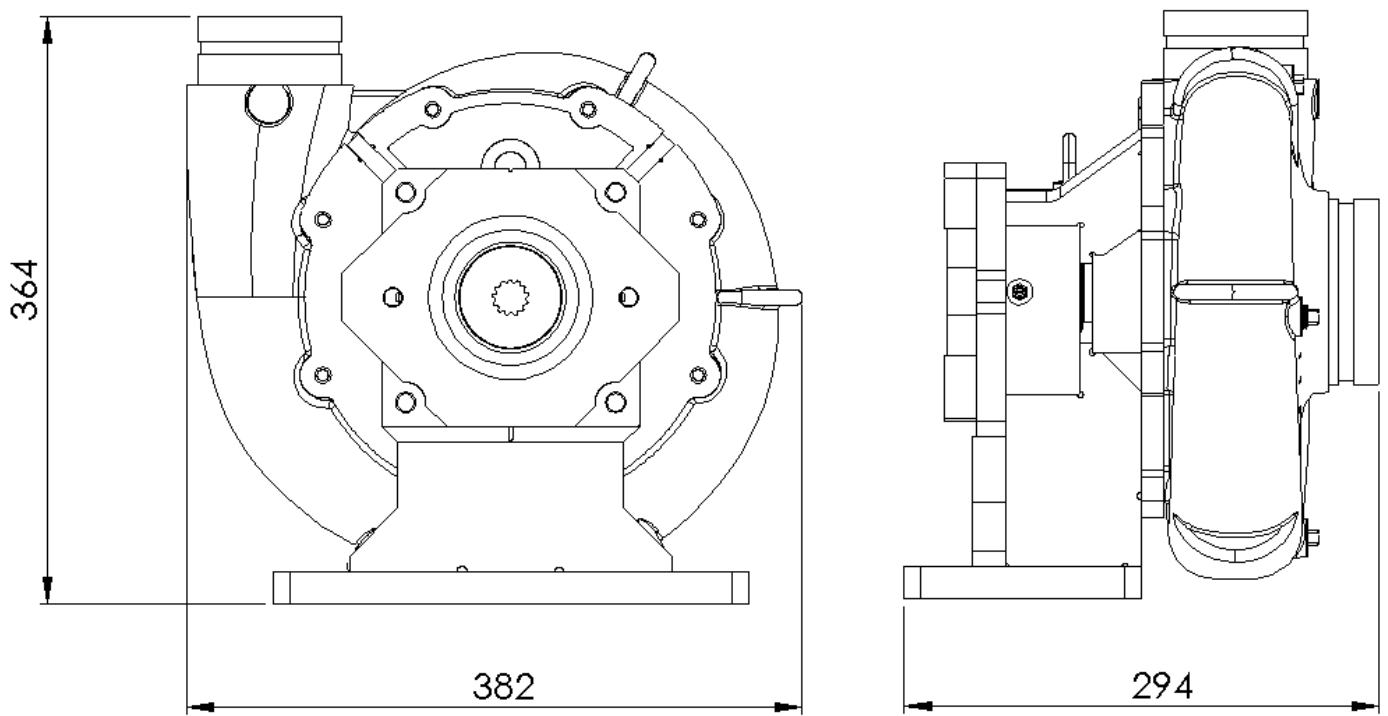
An integrated precision machined SEA-B mount enables **precise alignment** of a hydraulic motor. Various motors can be supplied to suit your requirements.

FEATURES

- Steel Frame
- Cast Iron Impeller
- High-tensile 4140 Shaft. (304 Stainless Option)
- 502 Mechanical Seal
- Close Coupled Hydraulic Drive
- Grooved Inlet and Outlet
- Local support and parts availability

SPECIFICATIONS	
Inlet	100mm (4") Roll Groove
Outlet	80MM (3") Roll Groove
Max Speed	2500 RPM
Hydraulic Motor Mount	SEA-B 2 Bolt
Motor Shaft	7/8" with 1/4" Key or 13T Spline
Shaft Material	High tensile 1040 Or stainless option
Impeller Material	Cast Iron, Stainless Option
Frame Material	Grade 250 Carbon Steel

PERFORMANCE	
Max Power	40HP 30KW
Max Flow	43PSI @ 3785LPM 30KW
Max Pressure	80PSI @ 1000 LPM 15KW
Max Efficiency	70PSI @ 2450LPM 23KW

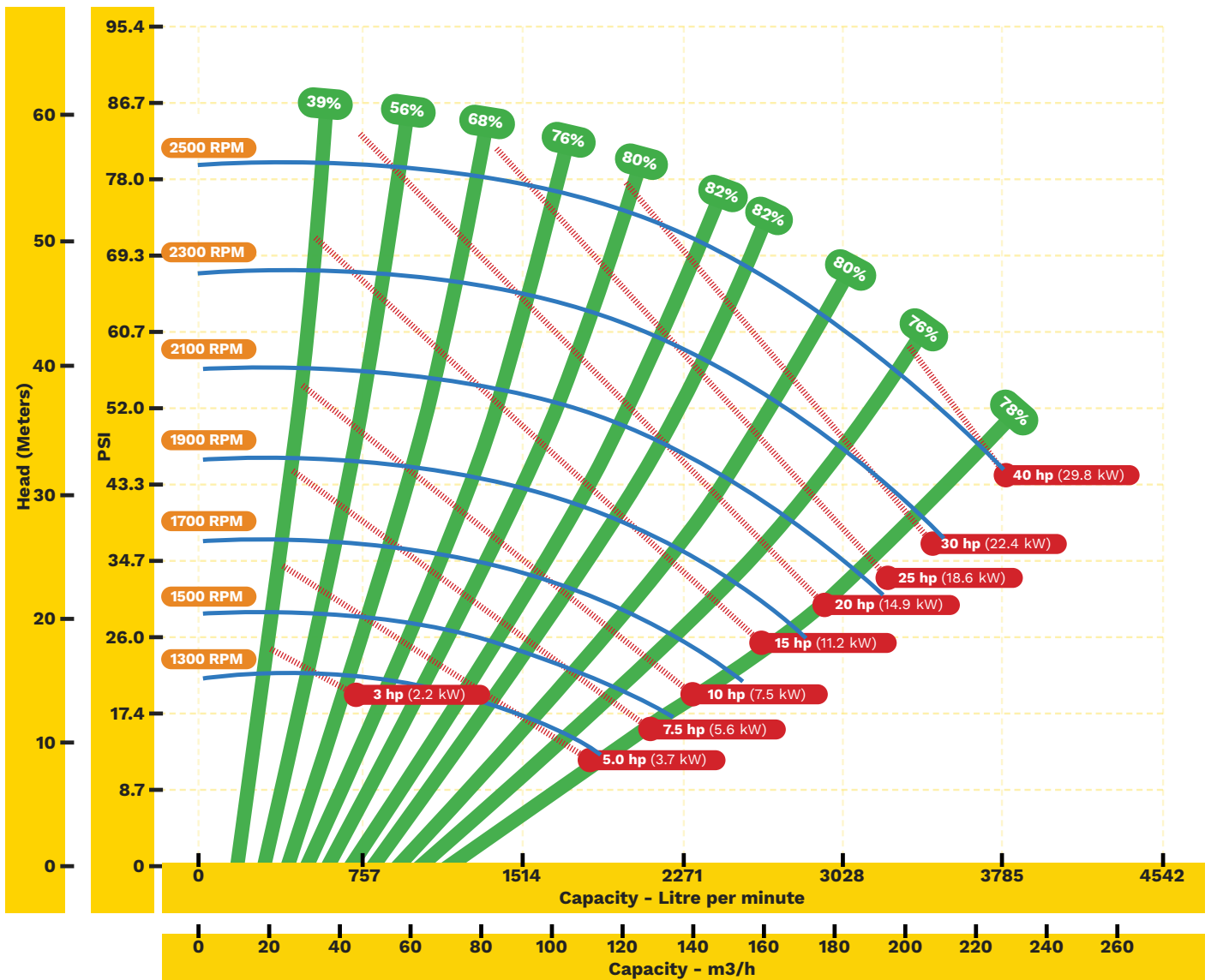


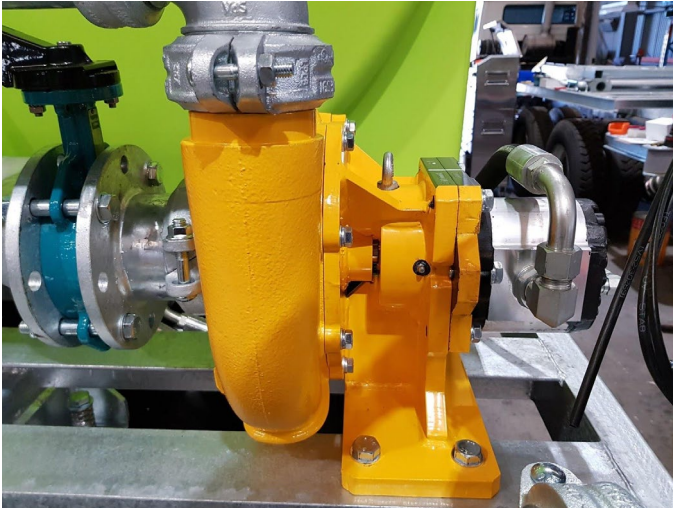
Speed

Efficiency

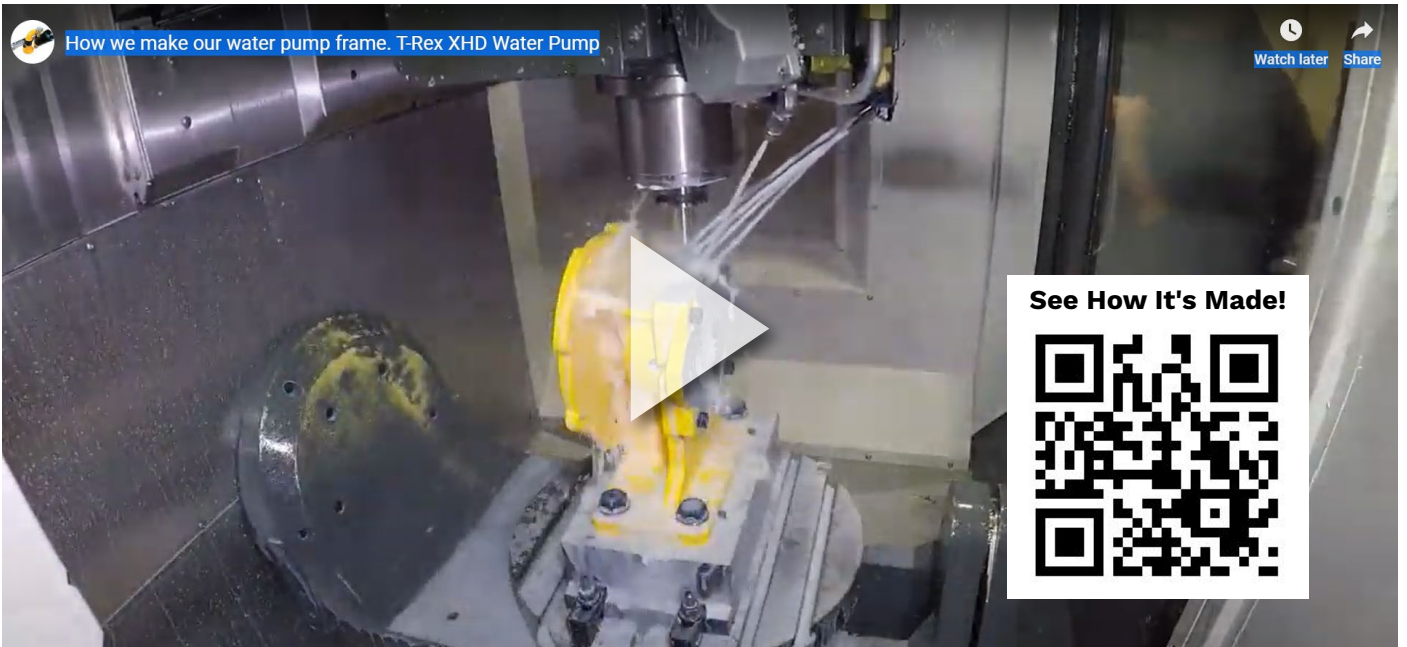
Flow Rate

Power





Check out how we make our water pumps



R&L Jones Engineering Pty Ltd
 Trading As T-Rex Water Trucks
 2 Ayton Street Sunshine North, VIC 3020
 ACN: 34 006 805 527
 Call Us at **1300 558 111**
info@trexwatertrucks.com.au